

# In search of shrews of Chiapas: analysis of their distribution and conservation

CONSUELO LORENZO<sup>1\*</sup>, JORGE BOLAÑOS-CITALÁN<sup>1</sup>, DARÍO NAVARRETE-GUTIÉRREZ<sup>2</sup>, JOSÉ A. PÉREZ-LÓPEZ<sup>1</sup> AND LÁZARO GUEVARA<sup>3</sup>

<sup>1</sup> Departamento de Conservación de la Biodiversidad, El Colegio de la Frontera Sur. Carretera Panamericana y Periférico Sur s/n, Barrio de María Auxiliadora CP. 29290, San Cristóbal de Las Casas. Chiapas, México. Email: [clorenzo@ecosur.mx](mailto:clorenzo@ecosur.mx) (CL), [jbolanos@ecosur.mx](mailto:jbolanos@ecosur.mx) (JBC), [joseyolyo24@gmail.com](mailto:joseyolyo24@gmail.com) (JAPL)

<sup>2</sup> Laboratorio de Información Geográfica, El Colegio de la Frontera Sur. Carretera Panamericana y Periférico Sur s/n, Barrio de María Auxiliadora CP. 29290, San Cristóbal de Las Casas. Chiapas, México. Email: [dnavarre@ecosur.mx](mailto:dnavarre@ecosur.mx) (DNG)

<sup>3</sup> Departamento de Zoología, Instituto de Biología, Universidad Nacional Autónoma de México, CP. 04510, Coyoacán. Ciudad de Mexico, Mexico, México. Email: [llg@ib.unam.mx](mailto:llg@ib.unam.mx) (LG)

\* Corresponding author

The state of Chiapas is home to multiple species of shrews (11 species), endemisms (three species from Mexico) and micro-endemisms (5 species from Chiapas). These species inhabit diverse physiographic regions and different types of habitats across the state. However, several are known by only very few specimens, mostly collected several years ago, making the knowledge about their natural history extremely scarce. This paper describes the efforts made by the authors along 16 years in search of shrews of Chiapas. Records were obtained from fieldwork, as well as by historical records from scientific collections and public databases. We estimated the relative abundances per species, identifying in each case the area of distribution and association with different types of vegetation and land use, current threats, and future research scenario for conservation purposes. The total trapping effort was 12,340 trap-nights across 13 sampling sites, with a total capture success of 0.18 %. In nine sampling sites, we succeeded in capturing 22 specimens of six species of shrews: *Cryptotis griseoventris*, *C. lacandonensis*, *C. merriami*, *C. mexicanus*, *C. pueblensis*, and *Sorex cristobalensis*. *C. griseoventris* had the highest relative abundance (31.81 %) and capture success (0.056), while *C. lacandonensis* showed the lowest relative abundance (4.54 %) and capture success (0.008). We present noteworthy records of shrews: 1) for being barely represented in scientific collections, as in *C. griseoventris*, and 2) for expanding the previously documented distribution area, as in *C. lacandonensis* and *C. merriami*. All of the species currently face serious conservation issues resulting from the loss of habitat. In particular, micro-endemic species such as *S. sclateri* and *S. stizodon* are seriously threatened. The specimens and records reported herein should foster further detailed research on the taxonomy, ecology, and biogeography to advance the knowledge of shrews inhabiting the southern border of Mexico.

El estado de Chiapas es rico en número de especies de musarañas (11 especies), endemismos (tres especies de México) y micro-endemismos (5 especies de Chiapas). Las especies habitan diversas regiones fisiográficas del estado y diferentes tipos de hábitat. Sin embargo, varias son conocidas por muy pocos ejemplares, la mayoría colectados desde hace varios años, por lo que el conocimiento sobre su historia natural es extremadamente escaso. Se dan a conocer los esfuerzos realizados por los autores a lo largo de 16 años en la búsqueda de las especies de musarañas de Chiapas. Se obtuvieron registros de muestreos de campo, así como registros históricos obtenidos de colecciones científicas y bases de datos públicas. Se estimaron las abundancias relativas por especie, identificaron su área de distribución y asociación a diferentes tipos de vegetación y uso de suelo, las amenazas que enfrentan y el panorama de investigaciones futuras para su conservación. El esfuerzo total de captura fue de 12,340 trampas/noche repartidos en 13 sitios de colecta, con un éxito total de captura de 0.18%. En nueve sitios de muestreo tuvimos éxito en la captura de 22 ejemplares de seis especies de musarañas: *Cryptotis griseoventris*, *C. lacandonensis*, *C. merriami*, *C. mexicanus*, *C. pueblensis* y *Sorex cristobalensis*. *C. griseoventris* tuvo los mayores valores de abundancia relativa (31.81%) y éxito de captura (0.056), mientras que los menores valores de abundancia relativa (4.54%) y éxito de captura (0.008) los presentó *C. lacandonensis*. Presentamos registros notables de musarañas: 1) por su escasa representación en colecciones científicas, como en *C. griseoventris*, y 2) por representar una ampliación de su distribución como en *C. lacandonensis* y *C. merriami*. Todas ellas están en una grave situación de conservación, debido a la pérdida de su hábitat. En particular, especies micro-endémicas tal como *S. sclateri* y *S. stizodon* están fuertemente amenazadas. Los ejemplares y registros que aquí se presenten deben contribuir a emprender estudios taxonómicos, ecológicos y biogeográficos más detallados para incrementar el conocimiento de las musarañas en la frontera sur de México.

**Key words:** Chiapas; conservation; distribution; endemisms; Mexico; Soricidae.

© 2019 Asociación Mexicana de Mastozoología, [www.mastozoologiamexicana.org](http://www.mastozoologiamexicana.org)

## Introduction

Of the Families of terrestrial mammals, shrews (order Eulipotyphla, family Soricidae) are a highly diverse group in Mexico, represented by four genera and at least 36 species: *Cryptotis* (15 spp.), *Megasorex* (1 sp.), *Notiosorex* (4 spp.), and *Sorex* (16 spp.; [Ramírez-Pulido et al. 2014](#); [Guevara et al. 2014a](#)). Recently, this group has undergone several taxonomic and nomenclatural changes ([Douady et al. 2002](#); [Carraway 2007](#); [Woodman et al. 2012](#); [Guevara et al. 2014a](#); [Matson and Ordóñez-Garza 2017](#)).

In Chiapas, shrews are represented by two genera (*Cryptotis* and *Sorex*) and 11 species: *Cryptotis goodwini*, *C. griseoventris*, *C. lacandonensis*, *C. merriami*, *C. mexicanus*, *C. pueblensis*, *C. tropicalis*, *Sorex cristobalensis*, *S. sclateri*, *S. stizodon*, and *S. chiapensis*. These species are distributed in six of the physiographic regions of Chiapas: Los Altos of Chiapas, Central Depression of Chiapas, Coastal Plain of Chiapas and Guatemala, Sierras of Northern Chiapas, the Lacandon Forest Ravines, Soconusco, and the Eastern portion of the Sierra Madre de Chiapas, from sea level up to 3,650 masl

**Table 1.** Records of species of shrews of Chiapas from 2002 to 2018 in different sampling dates and collection data using pitfall traps. ECO-SC-M = Mammal Collection of ECOSUR. CNMA = National Collection of Mammals.

Sampling Date (month/day/year)	Species	Catalog Collection No. (in order of appearance)	Locality	Latitude	Longitude	Vegetation	Height (m)	No. of Traps	No. of Nights	No. of Trap- Nights
05/22/2002	<i>Cryptotis griseoventris</i>	ECO-SC-M 1429	1	16.7491°	-92.6838°	Cloud Forest	2,376	100	1	100
11/7-9/2003	<i>Sorex cristobalensis</i>	CNMA 42919	2	16.7580°	-92.6813°	Cloud Forest	2,367	200	2	400
08/4-6/2005	<i>Cryptotis merriami</i>	ECO-SC-M 4429	3	16.4883°	-93.3800°	Coffee plantation	1,453	100	3	300
01/14-16/2006	<i>Cryptotis pueblensis</i>	ECO-SC-M 1807	1	16.7538°	-92.6819°	Cloud Forest	2,400	100	2	200
04/22-24/2007			2			Cloud Forest	2,400	100	2	200
09/27-30/2008	<i>Cryptotis merriami</i> , <i>Cryptotis pueblensis</i>	ECO-SC-M 2109, 2110	3	16.4883°	-93.3800°	Coffee plantation	1,453	100	3	300
08/27-30/2009	5 <i>Cryptotis griseoventris</i> , <i>Sorex cristobalensis</i>	ECO-SC-M 2177 - 2182	4	16.7203°	-92.7013°	Pine-oak forest	2,330	150	3	450
09/01-03/2010			4			Pine-oak forest	2,400	100	2	200
01/01/2011	<i>Cryptotis merriami</i>	ECO-SC-M 4444	5	16.9116°	-93.6120°	High tropical forest	779	100	1	100
07/23/2011	<i>Cryptotis lacandonensis</i>	ECO-SC-M 7951	6	17.1119°	-91.6221°	High tropical forest	553	100	1	100
09/06-09/2013			7			Pine-oak forest	220	120	3	360
07/16-18/2014	2 <i>Cryptotis pueblensis</i> , <i>Cryptotis mexicanus</i>	ECO-SC-M 7555, 7556, 7561	8	17.1343°	-93.1689°	Pine-oak forest	1,600	100	2	200
07/17/2014	<i>Cryptotis mexicanus</i>	ECO-SC-M 7574	9	17.1726°	-93.1386°	Cloud Forest	1,780	100	1	100
01/12-15/2015			10			Pine-oak forest	2,120	100	3	150
04/22-24/2015			11			Fallow land/cloud forest	1,350	100	2	200
07/06-09/2015	<i>Cryptotis merriami</i>	ECO-SC-M 7871	12	16.5034°	-93.3680°	Coffee plantation	1,350	120	3	360
10/09-11/2017	<i>Cryptotis mexicanus</i>	ECO-SC-M 8776	8	17.1343°	-93.1689°	Pine-oak forest	1,600	100	2	200
06/08/2018- 08/22/2018	<i>Sorex cristobalensis</i> , <i>Cryptotis griseoventris</i>	ECO-SC-M 9114, 9179	4	16.7216°	-92.7005°	Pine-oak forest	2,300	100	77	7,700
10/23-27/2018			13			Cloud Forest	2,500	180	4	720
<b>Total</b>		<b>22</b>							<b>117</b>	<b>12,340</b>

Locality 1: Huitepec Ecological Reserve, Eastern slope, 2 km NE of San Cristobal de Las Casas. M. San Cristobal de Las Casas.

Locality 2: Huitepec Ecological Reserve, 5.5 km NW of San Cristobal de Las Casas. M. San Cristobal de Las Casas.

Locality 3: Cerro Brujo. 2.6 km S of New Simojovel. M. Ocozocoautla.

Locality 4: San Jose Biological Station. 6.6 km SW of San Cristobal de Las Casas. M. San Cristobal de Las Casas.

Locality 5: 0.87 km SE of Emiliano Rabasa, RIB El Ocote. M. Ocozocoautla.

Locality 6: Méztabok Tourist Camp. M. Ocosingo.

Locality 7: Los Encuentros Ecological Park. M. San Cristobal de Las Casas.

Locality 8: Laguna Verde Nursery. 1 km W of Coapilla. M. Coapilla.

Locality 9: 5.6 km NE of Coapilla. Coapilla-Tapalapa Road. M. Coapilla.

Locality 10: El Madron. Fraccionamiento San Nicolas. 3.5 km SW of ECOSUR. M. San Cristobal de Las Casas.

Locality 11: Cerro Brujo. Comunidad Nuevo San Luis. 3.8 km SW of Nuevo Simojovel. M. Ocozocoautla.

Locality 12: Rancho El Porvenir. 1.65 km SW of Nuevo Simojovel. M. Ocozocoautla.

Locality 13: Huitepec Ecological Reserve, NNW slope, 2 km NE of San Cristobal de Las Casas. M. San Cristobal de Las Casas.

(Lorenzo *et al.* 2017). Specifically, shrews inhabit various habitats, including forests (mountain cloud, pine, oak, cedar, fir, and the associations thereof), mountain grasslands, tropical forests (high, medium, and low, evergreen, subdeciduous, deciduous), grasslands and secondary vegetation (Lorenzo *et al.* 2017).

Of the 11 species of shrews distributed in Chiapas, five (45.4 %) are endemic to the state (*Sorex stizodon*, *S. sclateri*, *S. cristobalensis*, *Cryptotis lacandonensis*, and *C. griseoventris*), indicating that the State is home to 30.5% of the diversity of shrews known in Mexico (Ramírez-Pulido *et al.* 2014; Guevara *et al.* 2014a; Lorenzo *et al.* 2017; Burgin *et al.* 2018).

Five species of shrews in Chiapas are listed under a protection category in the Mexican Official Standard NOM-059-SEMARNAT-2010 (SEMARNAT 2010): *C. tropicalis* (as *C. parva tropicalis*) and *Sorex cristobalensis* (as *S. saussurei cristobalensis*), subject to special protection (Pr); and *S. sclat-*

*eri*, *S. stizodon*, *S. chiapensis* (as *S. veraepacis chiapensis*), as threatened (A). The red list of the International Union for the Conservation of Nature (IUCN 2018) includes *C. tropicalis* (as *C. parva tropicalis*) as Data Deficient (DD), *C. griseoventris* as Endangered (EN), *S. sclateri* and *S. stizodon* as Critically Endangered (CR), and *S. chiapensis* as Least Concern (LC), being a subspecies of *S. veraepacis*. *Cryptotis lacandonensis* has not yet been evaluated.

Despite the high diversity of shrews in Chiapas, the number of localities and specimens deposited in biological collections are relatively small (Guevara *et al.* 2015). Besides, the information on ecological aspects is practically null. These facts prevent proper evaluation of the taxonomic and conservation status of the shrew species (Guevara *et al.* 2015; Burgin *et al.* 2018). For the above, this paper describes the efforts made by the authors along 16 years

in search of the species of shrews of Chiapas. The results include information about the distribution and ecology of species, as well as the scenario of future research for the conservation of shrews and their habitat in Chiapas.

## Materials and Methods

We collected information from the sampling of shrews of Chiapas at 13 different sites during 19 field trips from 2002 to 2018, each of different duration in days (Table 1). The sampling sites were located in mountain cloud forests, pine-oak forest in moist soil covered with leaf litter, medium and high tropical forest, fallow lands with patches of cloud forest, and coffee plantations. In each trip, we placed between 100 and 200 one-liter pitfall traps with no diversion fences.

In order to estimate relative abundances per species of shrews in the total sampling, we obtained the values of total trapping effort (number of trap-nights) and the capture success (number of individuals/trapping effort x100) by species (Horvath et al. 2010). We recorded information on the type of habitat where each specimen was found and the potential threats observed for their survival. The taxonomic identification was conducted by comparing the specimens collected with voucher specimens deposited in the Mammal Collection of El Colegio de la Frontera Sur (ECO-SC-M) and the Colección Nacional of the Instituto de Biología, Universidad Nacional Autónoma de México (CNMA), as well as the identification keys by Woodman and Timm (1999) and Carraway (2007).

Also, we used the Global Biodiversity Information Facility database (GBIF 2018) downloaded on 3 September 2018 (<https://doi.org/10.15468/dl.9wfkdg>), to gather information about historical records of shrews of Chiapas deposited in scientific collections. The search criteria included

the Order Soricomorpha (the updated name of the order is not currently active in the database) and the genera *Sorex* and *Cryptotis*, with all existing records. Subsequently, data were filtered according to country (Mexico) and then to state (Chiapas). Only those records with extensive information (locality, genus, species, collection catalog number, and geographic coordinates) were considered; subsequently, the nomenclature of some species was updated, and the location of each record across collection localities was confirmed using the ManisNet calculator (<http://manisnet.org/>; Wieczorek and Wieczorek 2015). The geographic coordinates of all shrew collection records were projected on a map of physiographic subprovinces (INEGI 1981), land use and vegetation of Chiapas based on INEGI series VI (2014-2017), in order to get a detailed identification of the distribution of each species in different types of vegetation and current land use.

## Results

Shrews were captured in nine of the 13 sampling sites: three sites in the municipality of San Cristóbal de Las Casas, including the type locality for *S. stizodon* (Huitepec Ecological Reserve), three in the municipality of Ocozocoautla, two in Coapilla and one in Ocosingo. The trapping effort yielded 22 specimens of six species of shrews (number of specimens in brackets): *C. griseoventris* (7), *C. pueblensis* (4), *C. merriami* (4), *S. cristobalensis* (3), *C. mexicanus* (3), and *C. lacandonensis* (1; Table 1). The total trapping effort was 12,340 trap-nights, and the overall success of capture was 0.18. Of the total number of specimens captured, the relative abundance of *C. griseoventris* was the highest, with 31.81 % and a capture success of 0.056. It was followed by *C. merriami* and *C. pueblensis*, with a relative abundance of 18.18 % and a capture success of 0.032; *S. cristobalensis* and

**Table 2.** Number of historical records of shrews of Chiapas by type of vegetation and land use, obtained from scientific voucher specimens from the Global Biodiversity Information Facility (GBIF) and field work records of (in parentheses). Types of vegetation and changes of land use: RA = Rainfed agriculture; HS = human settlements; OPf = oak-pine forest; Pf = pine forest; POf = pine-oak forest; CF = Cloud Forest; WB = water body; DV = devoid of vegetation; Pa = pasture; HMG = High mountain grassland; SVPf = secondary vegetation of pine forest; SVPOf = secondary vegetation of pine-oak forest; SVOF = secondary vegetation of oak forest; SVCF = secondary vegetation of cloud forest; SVTDF = secondary vegetation of tropical deciduous forest; SVHEf = secondary vegetation of high evergreen forest; UA = urban area.

	RA	HS	OPf	Pf	POf	CF	WB	DV	Pa	HMG	SVPf	SVPOf	SVOF	SVCF	SVTDF	SVHEf	UA	Grand total
<b><i>Cryptotis</i></b>	<b>13</b>	<b>5</b>	<b>3</b>	<b>1</b>	<b>3</b>	<b>2</b>	<b>2</b>	<b>4</b>	<b>9</b>	<b>1</b>		<b>21</b>	<b>1</b>	<b>10</b>	<b>3</b>	<b>4</b>	<b>25</b>	<b>107</b>
<i>goodwini</i>	2													1				3
<i>griseoventris</i>			2(1)	1	2							(6)	1				1	14
<i>lacandonensis</i>																2(1)		3
<i>merriami</i>	5												2	1(3)		(1)	1	13
<i>mexicanus</i>									2			(3)		3	2			10
<i>pueblensis</i>	4	3			(1)	2	2	4	5	1		7(2)	1(1)				23	56
<i>tropicalis</i>	2	2							2				1		1			8
<b><i>Sorex</i></b>	<b>4</b>				<b>2</b>	<b>9</b>			<b>1</b>		<b>1</b>	<b>7</b>		<b>8</b>			<b>1</b>	<b>33</b>
<i>cristobalensis</i>	1(1)				1	4			1			3(2)		2				15
<i>chiapensis</i>						5						1	2	6			1	15
<i>sclateri</i>	2																	2
<i>stizodon</i>					1													1
<b>Grand total</b>	<b>17</b>	<b>5</b>	<b>3</b>	<b>1</b>	<b>5</b>	<b>11</b>	<b>2</b>	<b>4</b>	<b>10</b>	<b>1</b>	<b>1</b>	<b>28</b>	<b>1</b>	<b>18</b>	<b>3</b>	<b>4</b>	<b>26</b>	<b>140</b>

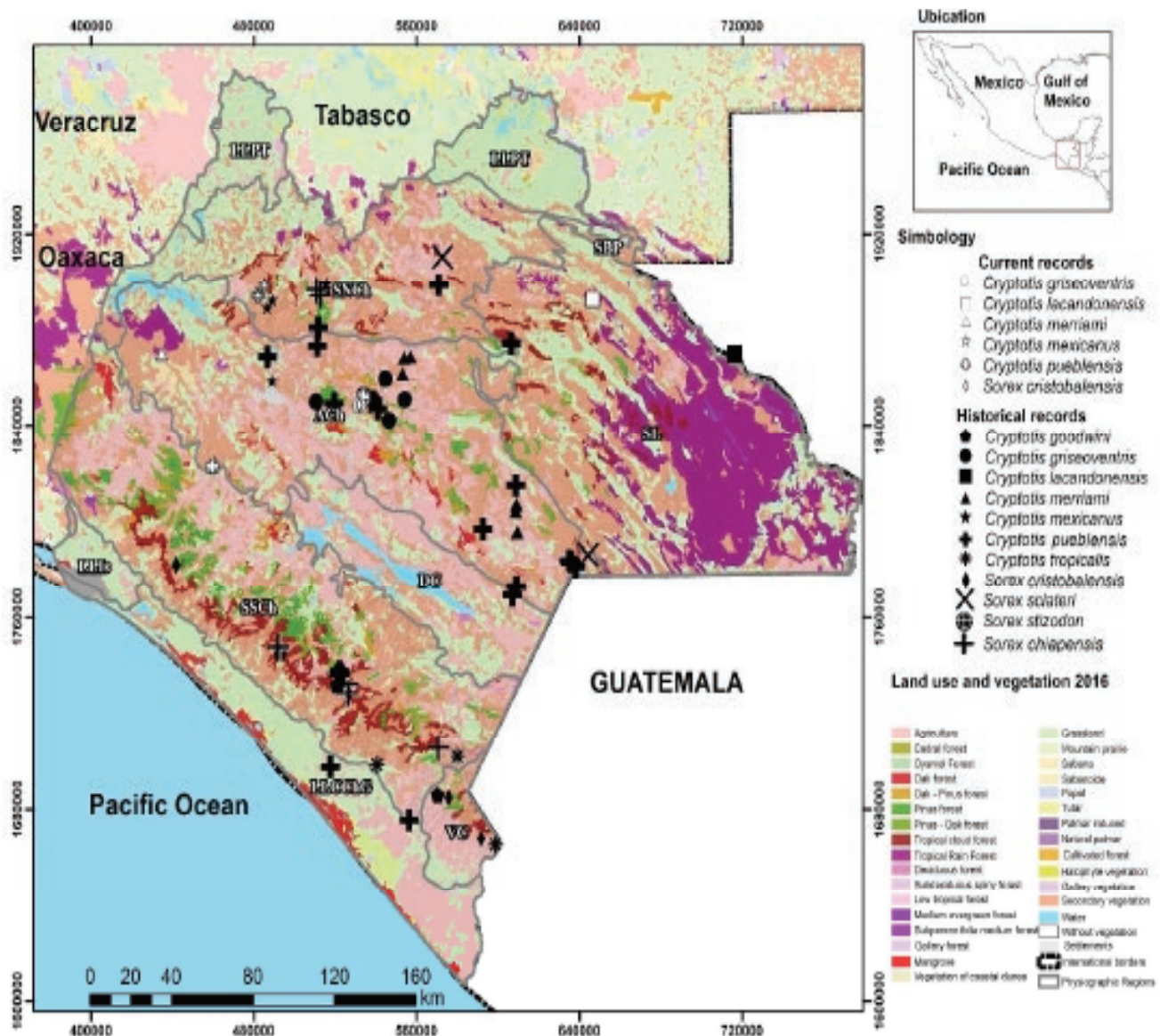
*C. mexicanus*, with a relative abundance of 13.63 % and a capture success of 0.024; and *C. lacandonensis*, with a relative abundance of 4.54 % and a capture success of 0.008.

Shrews were recorded in secondary vegetation of pine-oak forest (*C. griseiventris*, *C. mexicanus*, *C. pueblensis*, *S. cristobalensis*); secondary vegetation of cloud forest (*C. merriami*, *C. pueblensis*); secondary vegetation of high evergreen forest (*C. lacandonensis*, *C. merriami*); ranfed agriculture (*S. cristobalensis*); oak-pine forest (*C. griseiventris*); and pine-oak forest (*C. pueblensis*; Table 2; Figure 1).

In addition, 118 records for shrews were compiled from scientific collections dating back to 1895. Historical records of shrews correspond to different current types of habitat (Table 2; Figure 1). Current records of shrews in Chiapas are distributed in three of the 10 physiographic subprovinces, while there are historical records for six physiographic subprovinces (Table 3; Figure 1).

## Discussion

Shrews are among the least represented mammals in scientific mammal collections and, therefore, among the least studied and known. Increasing the records of shrews requires a greater effort focused on this taxonomic group, using traps with a high capture success, such as pitfall traps (Umetsu *et al.* 2006). Unfortunately, little research is conducted in North and South America specifically dedicated to the scientific collecting of shrews; consequently, the records we know are actually the result of incidental sampling that targeted other groups of small mammals, such as rodents (Lorenzo *et al.* 2016). In this study and over 16 years (since 2002) we found records of 22 specimens corresponding to six species of shrews, three of them with remarkable records for being barely represented, or for expanding their previously known distribution area: *C. griseiventris*, *C. lacandonensis*, and *C. merriami*, plus three species that are considered common, namely *C. mexicanus*, *C. pueblensis*, and *S. cristobalensis*.



**Figure 1.** Location of the species of shrews recorded in the state of Chiapas, by physiographic subprovince. AC = Altos de Chiapas; DC = Depresión Central de Chiapas; LLChG = Coastal plain of Chiapas y Guatemala; LLI = Isthmus plain; LLPT = Plain and wetlands of Tabasco; SBP = Petén Low Sierras; SL = Sierra Lacandona; SNCh = Sierras of Northern Chiapas; SSCh = Sierras of Southern Chiapas; VC = Volcanoes of Central America.

**Table 3.** Number of historical records of shrews of Chiapas by physiographic subprovince, obtained from scientific voucher specimens from the Global Biodiversity Information Facility (GBIF) and field work records of (in parentheses). Physiographic Subprovince: ACh = Altos de Chiapas; SL = Sierra Lacandona; DC = Central Depression of Chiapas; LLCChG = coastal plain of Chiapas and Guatemala; SNCh = Sierras of Northern Chiapas; SSCh = Sierras of Southern Chiapas; VC = Volcanoes of Central America.

	ACh	SL	DC	LLCChG	SNCh	SSCh	VC	Grand total	
<b><i>Cryptotis</i></b>	<b>64</b>	<b>4</b>	<b>1</b>	<b>4</b>	<b>17</b>	<b>14</b>	<b>3</b>	<b>107</b>	
<i>goodwini</i>							2	1	3
<i>griseoventris</i>	7 (7)								14
<i>lacandonensis</i>		2 (1)							3
<i>merriami</i>	9 (4)								13
<i>mexicanus</i>	1				7 (3)				11
<i>pueblensis</i>	34 (2)	1	1	4	5 (2)	7			56
<i>tropicalis</i>							5	2	7
<b><i>Sorex</i></b>	<b>10</b>				<b>4</b>	<b>17</b>	<b>2</b>	<b>33</b>	
<i>crystalensis</i>	4 (3)						6	2	15
<i>chiapensis</i>	1				3	11			15
<i>sclateri</i>	1				1				2
<i>stizodon</i>	1								1
<b>Grand total</b>	<b>74</b>	<b>4</b>	<b>1</b>	<b>4</b>	<b>21</b>	<b>31</b>	<b>5</b>	<b>140</b>	

**Noteworthy records.** *Cryptotis griseoventris* (Guatemalan broad-clawed shrew). Previously considered as a subspecies of *C. goldmani* (Carraway 2007), it is the species with the highest relative abundance, located in cloud forest and pine-oak forest between 2,330 and 2,376 masl. However, there are few records of its distribution, so its biology and ecology are little known. The records reported here were deemed unique and novel, as only sporadic records were known since the last confirmed one more than 50 years ago (Guevara et al. 2014b). Besides, this species seemingly has a small distribution area (< 5,000 km<sup>2</sup>), above 2,100 masl. in cloud forests and pine-oak forests in Los Altos de Chiapas, Mexico, and is probably endangered due to the deforestation of its habitat and climate change (Guevara et al. 2014b).

*Cryptotis lacandonensis* (Lacandon forest small-eared shrew). This species was recently described and little is currently known about its distribution and biology (Guevara et al. 2014a). It thrives in the Lacandon forest, within the Yaxchilán archaeological zone at 90 masl. in the municipality of Ocosingo. It is known by only two specimens collected on 3 February 1999 by L. A. Escobedo-Morales and deposited in the Museum of Zoology "Alfonso L. Herrera" (type specimen MZFC 7168, type adult female; MZFC 7107) of Universidad Nacional Autónoma de México (UNAM; Guevara et al. 2014a). The record presented here corresponds to an adult female (ECO-SC-M 7951) and is the third known specimen of this species. This specimen was collected in the Mézabok tourist camp, municipality of Ocosingo, in a high tropical forest at 553 masl, thus expanding its distribution area by 74.23 km to the NW of the type locality (Yaxchilán Archaeological Zone, Chiapas; Guevara et al. 2014a; Figure

1). We believe long-term field work should be conducted to assess its current conservation status and distribution area, both in Mexico and in neighboring countries.

*Cryptotis merriami* (Merriam's small-eared shrew). This species belongs to the *C. nigrescens* group of species, which is distributed from Chiapas and the Yucatan Peninsula down to northern South America, in addition to a pellet record from the state of Guerrero tentatively allocated to the *C. nigrescens* group (Lopez-Forment and Urbano 1977). It inhabits mountainous areas from Chiapas to Costa Rica, between 975 to 1,650 masl in pine-oak forest and agricultural areas near forests, and its biology is poorly known (Woodman et al. 2016a). Although it is considered a common species in Guatemala, there are only five known specimens by historical records in Chiapas: Mahosik, 32.18 km NE (Museum of Vertebrate Zoology, MVZ 141668); 30.4 km NE San Cristóbal de Las Casas, municipality of Tenejapa (MVZ 141671); Nabil, 28.96 km NE San Cristóbal de Las Casas, municipality of Tenejapa (MVZ 141669, MVZ 141670); 3.5 km N Las Margaritas, 1,493 m, Volcán Kagchina, municipality of Las Margaritas (Fort Hays Sternberg Museum Mammalogy Collection, FHSM 8779).

The specimens collected in this work belong to three different sampling sites in the municipality of Ocozocoautla in a high tropical forest between 588 and 779 masl, and in coffee plantations between 1,350 and 1,453 masl (Table 1; Figure 1). These records extend the distribution area in Chiapas by 122 km to the NW from the marginal record of Tenejapa, with the specimen collected at El Ocote; by 106 km to the SW with the two specimens collected at Cerro Brujo; and by 105 km to the SW with the specimen from Rancho El Porvenir. Also, these records extend the distribution area of the *C. nigrescens* group of species toward the north.

**Records of common species.** The records of *C. mexicanus*, *C. pueblensis*, and *S. cristobalensis* are consistent with the proposed geographic distribution for these species, as well as with the type of habitat and altitude.

*Cryptotis mexicanus* (Mexican small-eared shrew). This species is endemic to Mexico, distributed in mountains stretching from Chiapas to Tamaulipas (Guevara and Sánchez-Cordero 2018). This species is relatively common in cloud forest, pine-oak forest and forest edges between 520 and 2,600 masl (Cassola 2016). Records are located in cloud forest at 1,780 masl and pine-oak forest at 1,600 m (Table 1; Figure 1). Previously, *C. mexicanus* was only known through a single specimen from Los Altos, Chiapas, Mexico (Choate, 1970). According to Guevara and Sánchez-Cordero (2018), the Los Altos de Chiapas population may be differentiated at the species level from the population living west of the Isthmus of Tehuantepec; hence, these records are highly relevant for future taxonomic revisions.

*Cryptotis pueblensis* (Small-eared shrew from Puebla). It was previously considered as a subspecies of *C. parvus* (Whitaker 1974), distributed from eastern United States and

southeastern Ontario, Canada, to eastern New Mexico and in northeastern, central and southern Mexico. Recently, *C. parvus* was divided into several species, one being *C. pueblensis*. This is regarded as a relatively common species that may be tolerant to some degree of habitat modification (Woodman *et al.* 2016b). Records are located in cloud forest at 2,400 masl, pine-oak forest at 1,600 masl., and coffee plantations at 1,453 masl (Table 1; Figure 1).

*Sorex cristobalensis* (San Cristobal shrew). This species belongs to the *S. salvini* group and has been considered as a subspecies of *S. saussurei*, *S. veraecrucis* and *S. salvini* (Woodman *et al.* 2012). Matson and Ordóñez-Garza (2017) escalated it to the species level. It is known from three localities in Chiapas from 1,900 to 2,560 masl, in high mountain forests (Matson and Ordóñez-Garza 2017). The records included here are located in cloud forest at 2,367 masl and pine-oak forest at 2,330 m (Table 1; Figure 1).

*Lack of species records.* No success was achieved in the capture of three species of widely distributed shrews that are common in mountainous areas of Chiapas above 1,200 masl. However, there are historical records of these species in Chiapas: *Cryptotis goodwini* found in central and eastern parts of Sierra Madre de Chiapas; *C. tropicalis*, in southeast Sierra Madre de Chiapas and southeast Central Depression; and *Sorex chiapensis*, in the southeastern Sierra Madre de Chiapas and Macizo Central. In all these areas, deforestation is a major threat while agricultural and urban development are potential threats (Woodman 2008; Cuarón and de Grammont 2017; Matson *et al.* 2017). It is imperative to perform sampling targeting these species throughout their distribution range in Chiapas and determine their current type of habitat, as well as to identify the current threats to their populations. Also, two species that are micro-endemic to Chiapas were not collected, namely *S. sclateri* and *S. stizodon*, which deserve special mention.

*Sorex sclateri* (Sclater's shrew). This species inhabits the mountains in northern Chiapas, in Tumbalá, at 1,524 masl, municipality of Tumbalá. It is known from only five specimens, four collected from 23 to 25 October 1895 by E. W. Nelson and E. A. Goldman, deposited at the National Museum of Natural History, Smithsonian Institution (USNM 75871, 75872 type specimen adult female, 75873, 75874; Merriam 1897; Carraway 2007) and one specimen collected on 19 April 1967 by A. Ramirez at San Antonio Buenavista, municipality of La Independencia, deposited in the Mammalogy Collection of Escuela Nacional de Ciencias Biológicas, Instituto Politécnico Nacional (ENCB 2860; Carraway 2007). This species has not been spotted within protected natural areas, implying considerable threats to its habitat due to the loss and fragmentation of its habitat resulting from changes in land use (livestock, agriculture and logging). The distance between the two known localities for this species is 143 km (in a straight line); both are found in different physiographic provinces with their own environmental conditions and vegetation. Advancing knowledge

about their conservation status is currently limited by the social conflicts that are on the rise throughout the state (*i. e.*, displacement of indigenous communities) and, in particular in the type locality, by the development of mining and land ownership issues; these aggravating circumstances make it impossible to carry out field work, although efforts have already been made.

*Sorex stizodon* (Pale-toothed shrew). This species is known only from a single specimen collected 124 years ago (25 September 1895) by E. W. Nelson and E. A. Goldman within a natural protected area, the Huitepec Ecological Reserve, at 2,743 m, municipality of San Cristóbal de Las Casas, and deposited in the National Museum of Natural History, Smithsonian Institution (USNM 75885 type adult female; Merriam, 1895; Carraway 2007); hence, it has been considered as potentially extinct (Ceballos and Navarro 1991). Currently, there are strong environmental issues around this reserve, derived from human activities that threaten it from the outside, including the expansion of human settlements, invasions to the reserve, and change of land use to agriculture (Calderon *et al.* 2012; Morales *et al.* 2013). This situation is further aggravated by illegal logging and extraction of epiphytes inside the reserve (Enríquez and Rangel 2009), and by the presence of invasive species such as dogs and feral cats from the city of San Cristobal de Las Casas (Santiz 2018). For these reasons, we presume that, if a population still exists, its survival is severely threatened.

If the current trends regarding the modification of its habitat, and the pressure from the presence of invasive species, this species may become extinct in the short term. On the other hand, the life cycle of shrews (*Cryptotis* and *Sorex*) has a duration of between one and two years (Rudd 1955; Pfeiffer and Gass 1963; Owen and Hoffmann 1983; Choate *et al.* 1994; Laerm *et al.* 2007), meaning that an average of 92 generations have passed since this species was first discovered, with no single individual detected during this time; this is remarkable, as it is one of the criteria established by IUCN (2012) to list a species as extinct.

*Scenario of future research for the conservation of shrews of Chiapas.* All species of shrews of Chiapas are currently facing a serious conservation threat derived from the loss of habitat (cloud forests, pine-oak forests and tropical forests) by deforestation, which shows annual rates above 3 % in the state (Soto-Pinto *et al.* 2012) and from the anthropogenic climate change. Changes in the distribution and abundance of some species of shrews may be affected by changes of land use from forests to crops and pastures intended for agricultural and livestock activities (Naranjo *et al.* 2016). Examples of this phenomenon are the degree of disturbance of the original vegetation and that some historical records of shrews are located in currently altered vegetation types, such as rainfed agriculture, secondary vegetation, areas devoid of vegetation, as well as human settlements and urban areas; we do not know whether the original populations are still present in these areas. Within

mammals, shrews are amongst the groups with the lowest dispersal capability; therefore, these are highly vulnerable to habitat transformation and climate change (Urban *et al.* 2013). A key aspect that deserves evaluation is the extent to which these changes affect populations of micro-endemic shrews, as is the case of *S. sclateri* in agricultural areas and *S. stizodon* around human settlements. Also, the displacement of opportunistic mammals (*e. g.*, domestic rodents, cats and dogs; Naranjo *et al.* 2016) driven by the changes in vegetation threaten the survival of the populations of shrews.

Field studies should be promoted, since the intensive and targeted field monitoring will allow considering whether the species of shrews of Chiapas are indeed absent in areas where these were previously recorded, assessing their conservation status, redefining their risk category, and even determining whether these are already extinct in the wild. It is important to communicate the results of biological scientific investigations of the species of shrews of Chiapas to various sectors of society and decision-makers. It is also highly important to preserve and properly manage the habitat where shrews thrive, create and maintain biological corridors, and promote realistic alternatives for the sustainable use of wild flora and fauna involving the participation of the local communities to improve the local economy, *i. e.*, through the promotion of *in situ* instruments of environmental policy (Naranjo *et al.* 2013, 2016). If a feasible conservation strategy is not implemented, the loss of the diversity of shrews in Chiapas will be unavoidable.

## Acknowledgments

We thank M. Aranda-Coello for support in the monitoring of shrews in the San Jose Biological Station, San Cristóbal de Las Casas. To Pronatura Chiapas for granting permission and support over the years for conducting field work in the Huitepec Ecological Reserve, San Cristobal de Las Casas. To the General Direction for Wildlife at Secretaría del Medio Ambiente y Recursos Naturales (Mexico's Secretariat of the Environment and Natural Resources) for support throughout the study in granting the scientific collection license # FAUT-0143 in support to mammal-related activities to C. Lorenzo. To civil and government authorities in the municipalities of Ocozocoautla, Coapilla, and Ocosingo, which allowed us to perform field work in the area. To all students who have supported us in the search for populations of shrews over 16 years of field work and in the Mammalogy Collection at El Colegio de la Frontera Sur (ECOSUR). Two anonymous reviewers provided comments that greatly improved this manuscript. María Elena Sánchez-Salazar translated the manuscript into English.

## Literature cited

BURGIN, C., K. HE, R. HASLAUER, B. I. SHEFTEL, P. D. JENKINS, M. RUEDI, S. HINTSCHE, M. MOTOKAWA, A. HINCKLEY, AND R. HUTTERER. 2018. Species accounts of Soricidae. *In* Handbook of the mammals of the world. Vol. 8. Insectivores, sloths and colugos (Wilson,

D. E., and R. A. Mittermeier, eds.). Lynx Edicions. Barcelona, España.

- CALDERÓN, A., L. SOTO, AND E. ESTRADA. 2012. Entre la conservación del bosque y el crecimiento de la ciudad: las localidades rurales en el espacio periurbano del Huitepec en San Cristóbal de Las Casas, Chiapas, México. *Estudios demográficos y urbanos* 27:739-787.
- CARRAWAY, L. N. 2007. Shrews (Eulipotyphla: Soricidae) of Mexico. *Monographs of the Western North American Naturalist* 3:1-91.
- CASSOLA, F. 2016. *Cryptotis mexicana*. The IUCN Red List of Threatened Species 2016: e.T41374A22286065. Available on <http://dx.doi.org/10.2305/IUCN.UK.2016-2.RLTS.T41374A22286065>. Downloaded on 19 September 2018.
- CEBALLOS, G., AND D. NAVARRO. 1991. Diversity and conservation of Mexican mammals. Pp. 167-198 *in* Latin American Mammalogy: history, diversity and conservation (Mares, M. A., and D. J. Schmidly, eds.). University of Oklahoma Press. Norman, U. S. A.
- CUARÓN, A. D., AND P. C. DE GRAMMONT. 2017. *Cryptotis goodwini* (errata version published in 2018). The IUCN Red List of Threatened Species 2017: e.T48269679A123794650. Downloaded on 20 September 2018.
- CHOATE, J. 1970. Systematics and Zoogeographic of Middle American shrews of the genus *Cryptotis*. University of Kansas Publications. Museum of Natural History 19:195-317.
- CHOATE, J., J. JONES, AND C. JONES. 1994. Handbook of Mammals of the South-Central States. Baton Rouge and London. Louisiana State University Press.
- DOUADY, C. J., P. I. CHATELIER, O. MADSEN, W. W. DE JONG, F. CATZEFLIS, M. S. SPRINGER, AND M. J. STANHOPE. 2002. Molecular phylogenetic evidence confirming the Eulipotyphla concept and in support of hedgehogs as the sister group to shrews. *Molecular Phylogenetics and Evolution* 25:200-209.
- ENRIQUEZ, P., AND J. L. RANGEL. 2009. La Reserva Ecológica Huitepec. CONABIO. *Biodiversitas* 85:6-10.
- GBIF (GLOBAL BIODIVERSITY INFORMATION FACILITY). 2018. Global Biodiversity Information Facility Database. Available on <https://www.gbif.org/>. Downloaded on 3 September, 2018. <https://doi.org/10.15468/dl.9wfkdgj>
- GUEVARA, L., V. SÁNCHEZ-CORDERO, L. LEÓN-PANIAGUA, AND N. WOODMAN. 2014a. A new species of small-eared shrew (Mammalia, Eulipotyphla, *Cryptotis*) from the Lacandona rain forest, Mexico. *Journal of Mammalogy* 95:739-753.
- GUEVARA, L., C. LORENZO, S. ORTEGA-GARCÍA, AND V. SÁNCHEZ-CORDERO. 2014b. Noteworthy records of an endemic shrew from México (Mammalia, Soricomorpha, *Cryptotis griseoventris*), with comments on taxonomy. *Mammalia* 78:405-408.
- GUEVARA, L., F. A. CERVANTES, AND V. SÁNCHEZ-CORDERO. 2015. Riqueza, distribución y conservación de los topos y las musarañas (Mammalia, Eulipotyphla) de México. *Therya* 6:43-68.
- GUEVARA, L. AND V. SÁNCHEZ-CORDERO. 2018. Patterns of morphological and ecological similarities of small-eared shrews (Soricidae, *Cryptotis*) in tropical montane cloud forests from Mesoamerica. *Systematics and Biodiversity* 16:551-564.
- HORVÁTH, A., E. J. NARANJO, AND J. E. BOLAÑOS. 2010. Bases para el monitoreo de mamíferos silvestres. Pp. 50-70 *in* Manual para el reconocimiento, evaluación y monitoreo de la diversidad biológica (León-Cortés, J. L., E. J. Naranjo, N. Ramírez-Marcial,

- J. L. Rangel-Salazar, A. Horváth, A. Muñoz-Alonso, and M. Ishiki-Ishihara, coords.). El Colegio de la Frontera Sur. Chiapas, México.
- INEGI (INSTITUTO NACIONAL DE ESTADÍSTICA, GEOGRAFÍA E INFORMÁTICA). 1981. Subprovincias fisiográficas, escala 1:1000000. Chiapas: Secretaría de Obras Públicas, Gobierno del Estado de Chiapas.
- INEGI (INSTITUTO NACIONAL DE ESTADÍSTICA, GEOGRAFÍA E INFORMÁTICA). 2014-2017. Guía para la interpretación de cartografía: uso del suelo y vegetación: escala 1:250,000: serie VI. Ciudad de México, México. Instituto Nacional de Estadística y Geografía.
- IUCN (INTERNATIONAL UNION FOR CONSERVATION OF NATURE). 2012. Categorías y Criterios de la Lista Roja de la UICN: Versión 3.1. Segunda edición. Gland, Suiza y Cambridge, Reino Unido: UICN. vi + 34pp. Originalmente publicado como IUCN Red List Categories and Criteria: Version 3.1. Second edition. Gland, Switzerland and Cambridge, UK.
- IUCN (INTERNATIONAL UNION FOR CONSERVATION OF NATURE). 2018. IUCN Red List of Threatened Species. International Union for Conservancy of Nature and Natural Resources. Available on <http://www.iucnredlist.org/>. Downloaded on 1 November 2018.
- LAERM, J., W. FORD, AND B. CHAPMAN. 2007. The Land Manager's Guide to Mammals of the South. Durham, NC. USDA Forest Service and The Nature Conservancy.
- LÓPEZ-FORMENT, C. W., AND G. URBANO. 1977. Restos de pequeños mamíferos recuperados en regurgitaciones de lechuza, *Tyto alba*, en México. Anales del Instituto de Biología, Universidad Nacional Autónoma de México, Serie Zoología 48:231-242.
- LORENZO, C., M. BRIONES-SALAS, AND S. T. ÁLVAREZ-CASTAÑEDA. 2016. The current status of micro endemic species of mammals and their prospects of conservation in southern Mexico. *Therya* 7:353-356.
- LORENZO, C., J. BOLAÑOS-CITALÁN, E. SÁNTIZ, AND D. NAVARRETE. 2017. Diversidad y conservación de los mamíferos terrestres de Chiapas, México. *Revista Mexicana de Biodiversidad* 88:735-754.
- MATSON, J., N. WOODMAN, I. CASTRO-ARELLANO, AND P. C. DE GRAMMONT. 2017. *Sorex veraepacis*. The IUCN Red List of Threatened Species 2017: e.T41427A22315421. Available on <http://dx.doi.org/10.2305/IUCN.UK.2017-2.RLTS.T41427A22315421.en>. Downloaded on 20 September 2018.
- MATSON, J. O., AND N. ORDÓÑEZ-GARZA. 2017. The taxonomic status of Long-tailed shrews (Mammalia: genus *Sorex*) from Nuclear Central America. *Zootaxa* 4236:461-483.
- MERRIAM, C. H. 1895. Synopsis of the American shrews of the genus *Sorex*. *North American Fauna* 10.
- MERRIAM, C. H. 1897. Descriptions of five new shrews from Mexico, Guatemala, and Colombia. *Proceedings of the Biological Society of Washington* 11:227-230.
- MORALES, H., M. CASTILLO, R. NIGH, AND E. VALENCIA. 2013. Conservación del Huitepec: mirando hacia afuera de la reserva. Pp. 330-331 in Comisión Nacional para el Conocimiento y Uso de la Biodiversidad (CONABIO). La biodiversidad de Chiapas: estudio de estado. Comisión para el Conocimiento y Uso de la Biodiversidad (CONABIO) y Gobierno del Estado de Chiapas. Chiapas, México.
- NARANJO, E. J., C. LORENZO, A. HORVÁTH, A. RIECHERS, E. ESPINOZA-MEDINILLA, J. E. BOLAÑOS-CITALÁN, AND ET AL. 2013. Diversidad y conservación de los mamíferos. Pp. 351-361 in La biodiversidad en Chiapas: estudio de estado. Comisión Nacional para el Conocimiento y Uso de la Biodiversidad-Gobierno del Estado de Chiapas. Ciudad de México, México.
- NARANJO, E. J., C. LORENZO, J. BOLAÑOS-CITALÁN, AND A. HORVÁTH. 2016. Diversidad y conservación de los mamíferos terrestres de Chiapas México. Pp. 155-178 in Riqueza y conservación de los mamíferos en México a nivel estatal (Briones-Salas, M., Y. Hortelano-Moncada, G. Magaña-Cota, G. Sánchez-Rojas, and J. E. Sosa-Escalante, eds.). Instituto de Biología, Universidad Nacional Autónoma de México, Asociación Mexicana de Mastozoología A. C., Universidad de Guanajuato. Ciudad de México, México.
- OWEN, J. G., AND R. S. HOFFMANN. 1983. *Sorex ornatus*. *Mammalian Species* 2121-5.
- PFEIFFER, C. J., AND G. H. GASS. 1963. Note on the longevity and habits of captive *Cryptotis parva*. *Journal of Mammalogy* 44:427-428.
- RAMÍREZ-PULIDO, J., N. GONZÁLEZ-RUIZ, A. L. GARDNER, AND J. ARROYO-CABRALES. 2014. List of recent land mammals of Mexico 2014. *Special Publications, Museum of Texas Tech University* 63:1-69.
- RUDD, R. L. 1955. Age, sex, and weight comparisons in three species of shrews. *Journal of Mammalogy* 36:323-339. <https://doi.org/10.2307/1375674>.
- SÁNTIZ, C. J. 2018. Estudio poblacional de roedores en la Reserva Ecológica Huitepec, San Cristóbal de Las Casas, Chiapas. Tesis Licenciatura. Universidad de Ciencias y Artes de Chiapas.
- SEMARNAT (SECRETARÍA DE MEDIO AMBIENTE Y RECURSOS NATURALES). 2010. Norma Oficial Mexicana NOM-059-SEMARNAT-2010. Protección ambiental, especies nativas de flora y fauna silvestres de México, categorías de riesgo y especificaciones para su inclusión, exclusión o cambio, y lista de especies en riesgo. *Diario Oficial de la Federación*, 30 de Dic de 2010, Segunda Sección. México. 2454:1-77.
- SOTO-PINTO, L., M. A. CASTILLO-SANTIAGO, AND G. JIMÉNEZ-FERRER. 2012. Agroforestry systems and local institutional development for preventing deforestation in Chiapas, Mexico. Pp. 333-350 in *Deforestation around the World* (Moutinho, P., ed.). InTech, Croacia. Downloaded on Rijeka. <http://www.intechopen.com/books/deforestation-around-the-world>.
- UMETSU, F., L. NAXARA, AND R. PARDINI. 2006. Evaluating the efficiency of pitfall traps for sampling small mammals in the Neotropics. *Journal of Mammalogy* 87:757-765.
- URBAN, M. C., P. L. ZARNETSKY, AND D. K. SKELLY. 2013. Moving forward: dispersal and species interactions determine biotic responses to climate change. *Annals of the New York Academy of Science* 1297:44-60.
- WHITAKER, J. O. 1974. *Cryptotis parva*. *Mammalian Species* 43:1-8.
- WIECZOREK, C., AND J. WIECZOREK. 2015. Georeferencing Calculator (version 20160929). Museum of Vertebrate Zoology, University of California, Berkeley. Available on <http://manisnet.org/gci2.html>. Downloaded on 5 November 2018.
- WOODMAN, N., AND R. M. TIMM. 1999. Geographic variation and evolutionary relationships among broad-clawed shrews of the *Cryptotis goldmani*-group (Mammalia: Insectivora: Soricidae). *Fieldiana, Zoology* 91:1-35.
- WOODMAN, N. 2008. *Cryptotis tropicalis*. The IUCN Red List of Threatened Species 2008: e.T136757A4336006. Available on <http://dx.doi.org/10.2305/IUCN.UK.2008.RLTS.T136757A4336006.en>. Downloaded on 20 September 2018.



- WOODMAN, N. 2010. Two new species of shrews (Soricidae) from the western highlands of Guatemala. *Journal of Mammalogy* 91:566-579.
- WOODMAN, N., J. O. MATSON, J. J. MCCARTHY, R. P. ECKERLIN, W. BULMER, AND N. ORDÓÑEZ-GARZA. 2012. Distributional records of shrews (Mammalia, Soricomorpha Soricidae) from northern Central America with the first records of *Sorex* from Honduras. *Annals of Carnegie Museum* 80:207–237.
- WOODMAN, N., J. MATSON, A. D. CUARÓN, AND P. C. DE GRAMMONT. 2016a. *Cryptotis merriami* (errata version published in 2017). The IUCN Red List of Threatened Species 2016: e.T136398A115207240. Available on <http://dx.doi.org/10.2305/IUCN.UK.2016-3.RLTS.T136398A22285651.en>. Downloaded on 19 September 2018.
- WOODMAN, N., J. MATSON, A. D. CUARÓN, AND P. C. DE GRAMMONT. 2016b. *Cryptotis parva* (errata version published in 2017). The IUCN Red List of Threatened Species 2016: e.T41377A115182514. Available on <http://dx.doi.org/10.2305/IUCN.UK.2016-3.RLTS.T41377A22284502.en>. Downloaded on 19 September 2018.

*Associated editor: Jesús Maldonado*

*Submitted: November 16, 2018; Reviewed: February 27, 2019;*

*Accepted: March 6, 2019; Published on line: April 20, 2019.*

