

# Occupancy, relative abundance and activity patterns of three sympatric deer associated to ponds

ALEJANDRO JIMÉNEZ-SÁNCHEZ<sup>1</sup>, JONATHAN O. HUERTA-RODRÍGUEZ<sup>2</sup>, ITZEL POOT-SARMIENTO<sup>3</sup>, ALAN DUARTE-MORALES<sup>3</sup> AND RAFAEL REYNA-HURTADO<sup>2\*</sup>

<sup>1</sup> Universidad de Guadalajara, Centro Universitario de Ciencias Biológicas y Agropecuarias. Camino Ramón Padilla Sánchez No. 2100, CP. 45200. Nextipac, Zapopan. Jalisco, México. E-mail: [manuel.jsanchez@alumnos.udg.mx](mailto:manuel.jsanchez@alumnos.udg.mx) (AJ-S).

<sup>2</sup> El Colegio de la Frontera Sur, Unidad Campeche. Av. Rancho Polígono 2-A, Col. Ciudad Industrial, CP. 24500. Lerma Campeche. Campeche, México. E-mail: [rreyna@ecosur.mx](mailto:rreyna@ecosur.mx) (RR-H); [johr.bio@gmail.com](mailto:johr.bio@gmail.com) (JOH-R).

<sup>3</sup> Universidad Autónoma de Campeche, Facultad de Ciencias Químico Biológicas. CP. 24084 San Francisco de Campeche. Campeche, México. E-mail: [al051903@uacam.mx](mailto:al051903@uacam.mx) (IP-S); [al059027@uacam.mx](mailto:al059027@uacam.mx) (AD-M).

\*Corresponding author: <https://orcid.org/0000-0003-4382-642x>.

Calakmul Biosphere Reserve is one of the largest tropical forests in the Americas, home to three species of deer, the white-tailed deer, *Odocoileus virginianus*, the Yucatán brown brocket deer, *Odocoileus pandora*, and the Central American Red brocket deer, *Mazama temama*. Important ecological aspects on the conservation of these species have been poorly studied. The aim of this study was to determine the occupancy, relative abundance and activity patterns of these species through nine years of camera-trapping in ponds of a Neotropical Forest in southern México, contributing to the understanding of the ecological patterns and conservation of Neotropical deer. To determine abundance, occupancy and activity patterns, we monitored 17 ponds from 2014 to 2022. To calculate abundance, we used the general relative abundance index and the temporal kernel density to evaluate the overlap in daily activity of the species. To obtain the occupancy, local colonization, local extinction and detection probabilities we utilize the dynamic occupancy model, while to assess the interaction of water and species we utilize the species co-occurrence occupancy models. White-tailed deer were the most abundant during the nine years of the study, with low pond occupancy, but with a high probability of colonization. The Brown brocket deer was the one with the highest probability of occupancy, showing a low abundance, followed by the red brocket deer, with a very low occupancy and abundance. Interaction with water was positive in two of the three analyzed species and activity was diurnal for *Odocoileus* species and cathemeral for *Mazama*. The use of ponds by deer varied in quantity and activity, but they are important places for their survival. The protection of the ponds should be fundamental for the conservation of the species in the area, these are water sources and places of food and shelter for wildlife.

La Reserva de la Biosfera de Calakmul es uno de los bosques tropicales más grandes de América, hogar de tres especies de venados, el venado de cola blanca, *Odocoileus virginianus*, el temazate pardo de Yucatán, *Odocoileus pandora*, y el temazate rojo centroamericano, *Mazama temama*. Los aspectos ecológicos importantes para la conservación de estas especies han sido poco estudiados. El objetivo de este estudio fue determinar la ocupación, abundancia relativa y patrones de actividad de estas especies a través de nueve años de fototrampeo en aguadas de un bosque Neotropical en el sureste de México, contribuyendo a la comprensión de los patrones ecológicos y la conservación de los venados neotropicales. Para determinar la abundancia, ocupación y patrones de actividad, se monitorearon 17 aguadas entre 2014 y 2022. Se utilizó el índice de abundancia relativa general para calcular la abundancia y la densidad temporal de Kernel para evaluar la superposición en la actividad diaria de las especies. El modelo de ocupación dinámica se utilizó para obtener la probabilidad de ocupación, colonización, extinción y detección, mientras que los modelos de ocupación de coocurrencia de especies se utilizaron para determinar la interacción del agua y las especies. El venado cola blanca fue la especie más abundantes durante los nueve años de estudio, con baja ocupación en las aguadas, pero con alta probabilidad de colonización. El temazate pardo presentó la mayor probabilidad de ocupación, mostrando una baja abundancia, seguida del temazate rojo, con una ocupación y abundancia muy baja. La interacción con el agua fue positiva en dos de las tres especies analizadas y la actividad fue diurna para las especies del género *Odocoileus* y catemeral para *Mazama*. El uso de las aguadas por parte de los venados es variado en cantidad y actividad, pero son lugares importantes para su sobrevivencia. La protección de las aguadas debe ser fundamental para la conservación de las especies de venados dentro de la reserva, ya que son una de las pocas fuentes de agua semiperennes y también lugares de alimento y refugio para la vida silvestre.

**Keywords:** Abundance; colonization; detection; extinction; *Mazama temama*; *Odocoileus pandora*; *Odocoileus virginianus*; ponds.

© 2024 Asociación Mexicana de Mastozoología, [www.mastozoologiamexicana.org](http://www.mastozoologiamexicana.org)

## Introduction

Calakmul Biosphere Reserve is one of the largest natural protected areas in México with 7,231 km<sup>2</sup> ([Comisión Nacional de Áreas Naturales Protegidas 2023](#)). It belongs to the Mayan rainforest, the biggest extension of tropical forest of North and Central America, and the second in America, just below the Amazon basin ([Secretaría de Medio Ambiente y Recursos Naturales 2018](#); [Reyna-Hurtado and Sanchez-Pinzón 2019](#)). Emblematic large mammals such as the jaguar (*Panthera onca*), the white lipped peccary (*Tayassu pecari*), and

the Central American tapir (*Tapirus bairdii*) still inhabit this forest ([Carabias-Lillo et al. 1999](#); [Reyna-Hurtado and Sanchez-Pinzón 2019](#)), as well as species of high cultural and alimentary importance for local communities, such as the white-tailed deer (*Odocoileus virginianus*) and two species of brocket deer (*Odocoileus pandora* and *Mazama temama*; [Weber 2000, 2005](#); [Reyna-Hurtado and Tanner 2005](#)). However, this protected area is subjected to water extraction, logging, road construction, agriculture and extensive livestock farming ([Weber 2008](#)). In addition, in recent years,

land clearing has increased due the construction of the “Tren Maya” megaproject and the touristic-urban complex “Hotel Maya” within the reserve, and these projects are expected to generate barrier effects (blocking of movement and trampling) and edge effects (due to noise; [Alayón-Gamboa et al. 2019](#); [Benítez et al. 2021](#)).

The white-tailed deer (Figure 1c) is the most widely distributed deer in the Americas, historically ranging from southern Canada (60° North Latitude), to southern Peru (15° South Latitude), and has been introduced to New Zealand, Czechoslovakia and Finland ([Ceballos 2014](#); [Gallina et al. 2014](#); [Gallina and López-Arévalo 2016](#)). Its wide distribution is due to its high adaptability, evident in its high morphological, physiological, biochemical and behavioral variation ([Weber 2014](#); [Gallina et al. 2014](#); [Gallina and López-Arévalo 2016](#)). The tropical subspecies have a dark coat color in humid rainforest, being reddish in subtropical environments ([Weber 2014](#); [Gallina and López-Arévalo 2016](#)). They are usually medium to small sized, with males weighting less than 60 kg and females less than 35 kg ([Gallina et al. 2010](#); [Weber 2014](#)). In the greater Calakmul Region, in areas with little hunting it has been described as an “opportunistic”, using habitat by its availability, showing preference for secondary vegetation and agricultural areas ([Weber 2005](#); [Reyna-Hurtado and Tanner 2005](#); [Weber 2008](#); [González-Marín et al. 2008](#)), preferring the low-flooded forest in areas with high hunting pressure ([Reyna-Hurtado and Tanner 2005](#); [Briceño-Méndez and Contreras-Moreno 2020](#)).

Yucatán brown brocket deer (Figure 1b), recently classified within the genus *Odocoileus* ([Gutiérrez et al. 2017](#)), is a medium-sized cervid. In the Great Calakmul Region the average weight of 13 captured male brocket deer was 20.5 kg, and that of eight adult females was 17.3 kg ([Weber and Medellín 2010](#); [Weber 2014](#)). The dorsal coat is uniform brown to brown grayish, becoming paler in the ventral area. It has a tuft of bristle-like stiff hair between the eyes and in the forehead. The antlers have massive pedicels and are large, divergent, often curving so the tips are convergent, but with a wide space between them ([Weber 2014](#)). The brown brocket deer is distributed in the Yucatán Peninsula, in the states of Yucatán, Campeche, and Quintana Roo, México and in northern Guatemala and northern Belize ([Weber and Medellín 2010](#); [Weber 2014](#); [Weber et al. 2016](#)). It has been described as a generalist species, using habitat due to its availability, showing no preference for a vegetation type ([Weber 2005](#); [Weber 2014](#)).

Central American red brocket deer (Figure 1a) is the smallest of the three deer species we discuss ([Weber 2014](#)) weighting 12 to 32 kg; in the Greater Calakmul Region the average weight of five adult males was 16.3 kg and that of four adult females was 13.2 kg ([Bello-Gutiérrez et al. 2010](#)). Its dorsal coat its deeply red, with darker tones on neck and head, and whitish ventral parts of the body and tail. Antlers are simple, lacking ramifications, growing no more than two inches ([Bello-Gutiérrez et al. 2010](#); [Weber 2014](#)). The limits of its distribution are unclear, having records in México, in

the states of Tamaulipas, San Luis Potosí, Veracruz, Puebla, Oaxaca, Chiapas, Tabasco, Campeche, and Quintana Roo, northern and central Belize, Guatemala, El Salvador, Costa Rica, Nicaragua, Honduras, Panama, and western Colombia ([Bello-Gutiérrez et al. 2010](#); [Bello et al. 2016](#); [Moreira-Ramírez et al. 2019](#)). It is a habitat specialist, occupying well-preserved humid forest ([Medellín and Equihua 1998](#); [Weber 2005](#); [Tejeda-Cruz et al. 2009](#); [García-Marmolejo et al. 2013](#); [García-Marmolejo et al. 2015](#)), occasionally using secondary vegetation, as long as there are well-preserved surrounding forest or vegetation that constitutes a high percentage of its diet, like the palm *Sabal mexicana* ([Tejeda-Cruz et al. 2009](#); [García-Marmolejo et al. 2015](#)), in areas with high hunting pressure, it uses low-flooded forest ([Reyna-Hurtado and Tanner 2005](#)).

Camera-trapping has been an important tool for the study of these and other medium-sized and large mammals, covering aspects ranging from species richness, abundance indices, density, occupancy, activity patterns, and even more complex aspects such as intraspecific, interspecific and environmental interactions ([Mandujano 2019](#)). In recent years, occupancy models are being used more frequently to evaluate the presence or absence of cryptic species and the relationship of the species with several variables of the landscape ([MacKenzie et al. 2011](#)). The advantage of occupancy models is that they incorporate the probability of detection, a parameter that can vary when species are cryptic, shy, exist in low densities, or when the environment changes make it difficult to sample the presence of a specific species ([MacKenzie et al. 2011](#)).

Through occupancy models and several others ecological estimators of wildlife populations parameters, knowledge about fauna has expanded, allowing for more structured conservation strategies ([Bruner et al. 2001](#)). Food, water sources, type and vegetation cover, distance from roads and human presence are factors that limits the presence, movement and size of populations of ungulates. The effects of those vary among species and from regions ([Lira-Torres and Naranjo Piñera 2003](#); [Weber 2008](#); [Pérez-Cortez et al. 2012](#); [García-Marmolejo et al. 2013](#)). However, basic ecological aspects as activity patterns, occupancy and the factors involved in these, have been poorly studied for these deer species ([Ramírez 2016](#); [Moreira-Ramírez et al. 2019](#)). The aim of this study was to evaluate the probabilities of occupation, local colonization, local extinction, detection, activity patterns, activity overlap and relative abundance of the three species of deer in the ponds of Calakmul Biosphere Reserve, through nine years of photo-trapping, contributing to the understanding of the ecological patterns and conservation of Neotropical deer that live in sympatry.

## Materials and methods

**Study area.** Calakmul Biosphere Reserve (CBR) is a protected area decreed in 1989, with an extension of 7,231 km<sup>2</sup>, located in the municipality of Calakmul, southeast Campeche, 19° 15' 17" N, -90° 10' 89" W ([Carabias-Lillo et al. 1999](#)). The reserve



**Figure 1.** a) Central American red brocket deer (*Mazama temama*). b) Yucatan brown brocket deer (*Odocoileus pandora*). c) White-tailed-deer (*O. virginianus*).

presents a tropical sub-humid climate, with a rainy season in summer (Jun to November), having an annual mean temperature of 24.6 °C, and an annual mean precipitation of 1,076 mm (Martínez and Galindo-Leal 2002). The reserve's hydrography is determined by the amount of rainfall, which is capable of flooding lowlands and forming temporary and permanent ponds and surface stream beds (Carabias-Lillo et al. 1999). The ponds are vital components of the landscape for wildlife, being one of the few water sources of the region in the dry season (Reyna-Hurtado et al. 2010; Pérez-Cortez et al. 2012). The main vegetation types in Calakmul are

high evergreen forest, medium sub evergreen forest, low evergreen and deciduous forest, savanna and hydrophytes (Pennington and Sarhukan 1998; Carabias-Lillo et al. 1999; Martínez and Galindo-Leal 2002).

*Camera trapping.* As part of a long-term study focused on wildlife uses of ponds in CBR conducted by R. Reyna-Hurtado and collaborators, camera trapping survey was conducted from February 1<sup>st</sup> 2014 to December 31<sup>st</sup> 2022 in as many as 17 ponds (Figure 2). A single camera trap was installed in each of a set of 10 to 17 ponds that were monitored along these years (Reconyx PC800 Hyperfire

professional Reconyx, Inc., Cuddeback Inc and Browning Strike Force Co.). Cameras were positioned 50 cm above the ground, and programmed to take five pictures every time the sensor detected movement. The cameras were checked every two months on average to change batteries and memory cards.

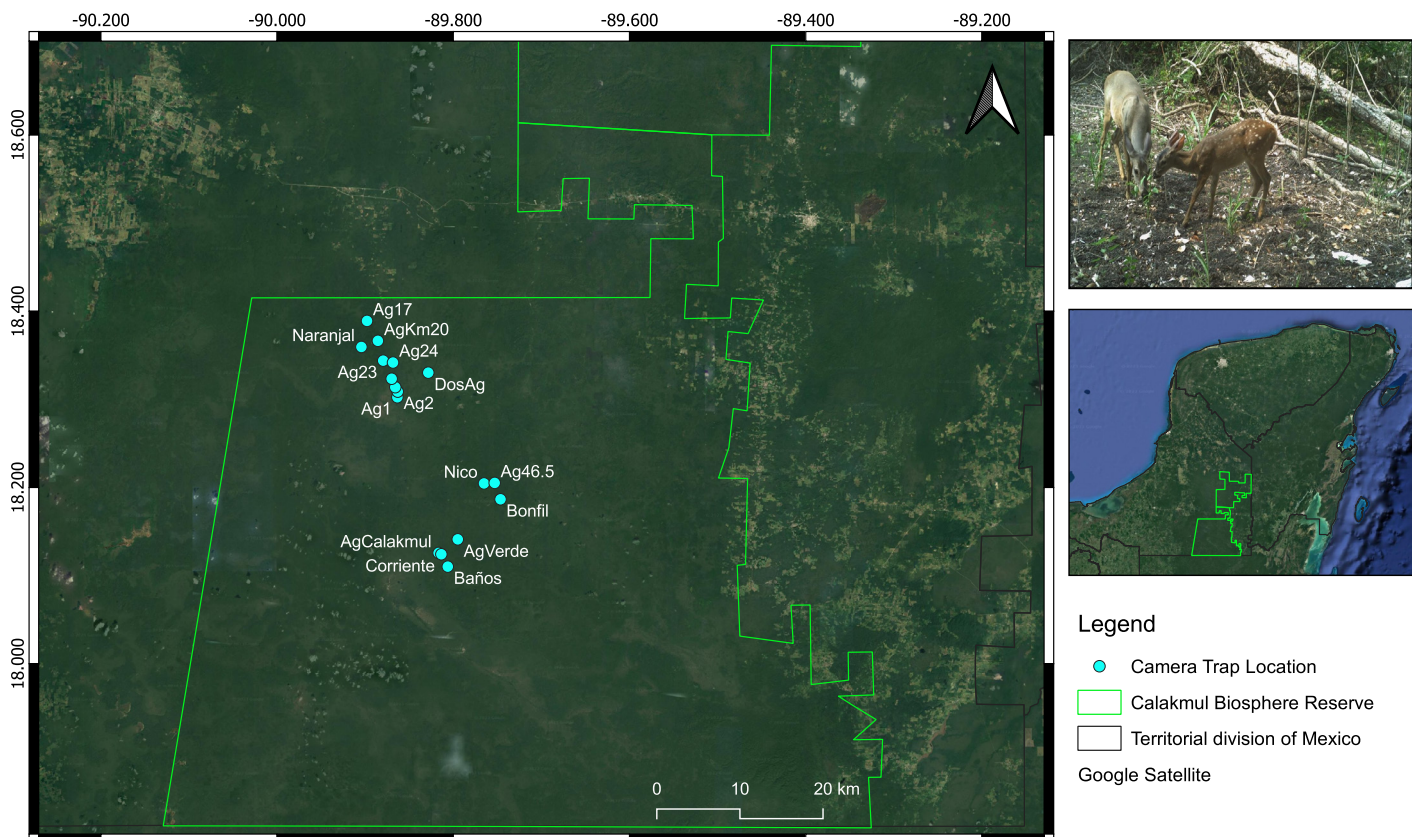
**Relative abundance.** To ensure the independence of the records, photographs obtained of the same species where individuals could not be recognized were selected in a 60-minute period, considering them as a single event (Tobler *et al.* 2008). To estimate the relative abundance index, we took the number of independent records of a selected species divided by the number of camera-nights, multiplied by 100 (O'Brien 2011; Mandujano 2019).

**Occupancy.** Following the methodology used by Loubrier *et al.* (2017) to calculate the probability of occupancy, local colonization, local extinction, and detection in the ponds over the nine years of camera-trapping, we used the dynamic model of occupancy designed by MacKenzie *et al.* (2003). The sampling units were the years from 2014 to 2022 and the secondary occasions were defined according to the months of the year (1 to 12). We created a detection history per species, where we pooled the records of detec-

tion (1) and non-detection (0) per periods. Assuming that occupancy ( $\psi$ ) is the probability that a site is occupied by the target species,  $p_{ij}$  is the probability of detecting the target specie, given presence, in survey  $j$  within primary period  $t$  (MacKenzie *et al.* 2003). Local colonization ( $\gamma$ ) is the probability that an unoccupied site in a primary sampling period ( $t$ ) is occupied in  $t + 1$ , and local extinction ( $\epsilon$ ) is the probability that an occupied site in a primary sampling period ( $t$ ) is unoccupied in  $t + 1$  (MacKenzie *et al.* 2003). For model selection we used the Akaike's information criterion (AIC; Burnham and Anderson 2002), models were performed using the *Unmarked* package in R (Kellner *et al.* 2023).

To limit the number of models we followed a hierarchical approach (Olson *et al.* 2005; Betts *et al.* 2008), and to evaluate the goodness of fit and the dispersion parameter ( $c$ -hat) of the best single species model we followed the procedure used by Andrade-Ponce *et al.* (2022). First, we created a model for each of the covariates to see their effects on the detection of the species, applying the Akaike's selection criterion to select the best one, similarly we performed these steps for occupation, local colonization and local extinction. The resulting models were contrasted with Akaike's selection criterion to choose the best model(s).

### Camera Trap Location Calakmul Biosphere Reserve



**Figure 2.** Geographic location of Calakmul Biosphere Reserve and sampled ponds.

The covariates used in this study were selected according to the possibility of their importance for the species at the time of visiting the ponds. a) The distance from the ponds to the road. b) The type of vegetation that predominates around the ponds following the classification of Pennington and Sarhukan (1998). c) Disturbance, measured as the influx of people to the ponds, being a "medium" level, when they are visited by this or another research group and/or having a medium level of tourism and being a "low" level, when they are only visited by our research group. d) The presence or absence of water. e) The year as a linear effect.

To determine a possible relationship between deer species occupancy and the presence of water, we used a multispecies model, since single-season or multi-season occupancy models consider that the variables affecting occupancy do not change during the entire study period (MacKenzie et al. 2003), while the presence or absence of water in the ponds varies over months and years. Therefore, to see its possible effect, water presence was analyzed as another species, solely for analysis purposes in the unmarked program (Kellner et al. 2023). The multispecies model allows estimating the probability of two or more species occurring simultaneously, as a function of covariates, using a multivariate Bernoulli distribution (Rota et al. 2016). For the analysis, a detection history was created for the presence of water and a null occupancy model was performed, to visualize if there was any type of interaction, and if it was significant. Finally, the species interaction factor (SIF) was estimated to corroborate the type of interaction between deer and water, where values equal to one suggest independence, values less than one indicate an inversely proportional relationship and values greater than one indicate a positive relationship (Richmond 2010). The analysis was performed through the *Unmarked* package in R (Kellner et al. 2023).

**Activity patterns.** Following the methodology used by Andrade-Ponce et al. (2022) we used the Kernel density estimation method, with the Von Mises distribution for circular data to estimate the overlap activity patterns (Ridout and Linkie 2009). To compare the overlap of daily activities of a pair of species we use the overlap coefficient ( $\Delta$ ), where values close to one reflect a similar activity pattern and values close to zero mark different activity patterns. In addition, we calculated the 95 % CI of each overlap coefficient with 10,000 bootstrap tests (Ridout and Linkie 2009). To assess whether the overlap coefficient was statistically significant, a randomized test was performed. If the resulting *P*-value is less than 0.05 it can be inferred that the Kernel circular probability distributions differ and therefore the result-

ing overlap is the result of chance. The packages *Activity* and *Overlap* were used to perform the tests in R version 2023.09.1+494 (Ridout and Linkie 2009; Rowcliffe 2023; R Core Team 2023).

## Results

**Relative Abundance.** During the nine years of camera-trapping, with an effort of 31,217 camera-nights, 225 independent records were obtained for Yucatan brown brocket deer, only 16 for Central American red brocket deer and 2,026 for white-tailed deer, the last species having the highest relative abundance (*RAI* = 6.49; Table 1), followed by the Yucatan brown brocket deer (*RAI* = 0.72; Table 1), and Central American red brocket deer having the lowest value (*RAI* = 0.05; Table 1).

Of the nine study years, the one with the highest relative abundance for *Odocoileus virginianus* was 2022 (*RAI* = 13.29; Table 1) and the lowest was 2014 (*RAI* = 3.47; Table 1). For *Odocoileus pandora* the highest year was 2019 (*RAI* = 1.51; Table 1) and the lowest was 2020 (*RAI* = 0.21; Table 1). *Mazama temama* was not recorded in six of the nine camera-trapping years, the one with the highest relative abundance was 2021 (*RAI* = 0.81; Table 1) and the lowest 2022 (*RAI* = 0.03; Table 1).

**Occupancy.** *Odocoileus pandora*. The probability of occupancy ( $\Psi = 0.98$ ), colonization ( $\gamma = 0.0001$ ), and extinction ( $\epsilon = 0.05$ ) of *O. pandora* was not related to any of the variables under analysis, however, the probability of detection was negatively influenced by low to medium disturbance of the ponds respectively, with values ranging from  $p = 0.500$  ( $\beta = 0.002$ , *P*-value = 0.99) to  $p = 0.077$  ( $\beta = -2.47$ , *P*-value = 0.001; Table 2; Figure 4a). The more human visitation the water pond received, the lower the detection of the species by the cameras. It presented a slightly positive interaction with respect to the presence of water in the ponds (*SIF* = 1.01, *P*-value = 2.85E-43; Figure 4c).

*Odocoileus virginianus*. Similar to *Odocoileus pandora*, the probability of occupancy ( $\Psi = 0.36$ ), colonization ( $\gamma = 0.86$ ), and extinction ( $\epsilon = 0.06$ ) were not affected by any of the covariates analyzed for *O. virginianus*. Detection probability was affected by the type of vegetation surrounding the ponds, with values ranging from  $p = 0.50$  ( $\beta = 0.18$ , *P*-value = 0.82) in lowland dry forest,  $p = 0.41$  ( $\beta = -0.28$ , *P*-value = 0.71) in the mid-humid forest and flooded lowland ecotone,  $p = 0.23$  ( $\beta = -1.16$ , *P*-value = 0.08) in mid-humid forest, and  $p = 0.19$  ( $\beta = -1.73$ , *P*-value = 0.01) in mid-dry forest (Table 2; Figure 4b). While interaction with water was also slightly positive (*SIF* = 1.03 *P*-value = 7.24E-08; Figure 4e).

**Table 1.** Relative abundance index in each of the nine years of photo-trapping.

Species	2014	2015	2016	2017	2018	2019	2020	2021	2022	9 years
<i>Odocoileus pandora</i>	0.48	1.17	0.88	0.96	0.96	1.51	0.21	0.41	0.89	0.72
<i>Mazama temama</i>	0.00	0.00	0.00	0.078	0.00	0.00	0.00	0.81	0.039	0.05
<i>Odocoileus virginianus</i>	3.47	10.63	3.97	7.53	7.29	4.96	3.64	5.50	13.29	6.49

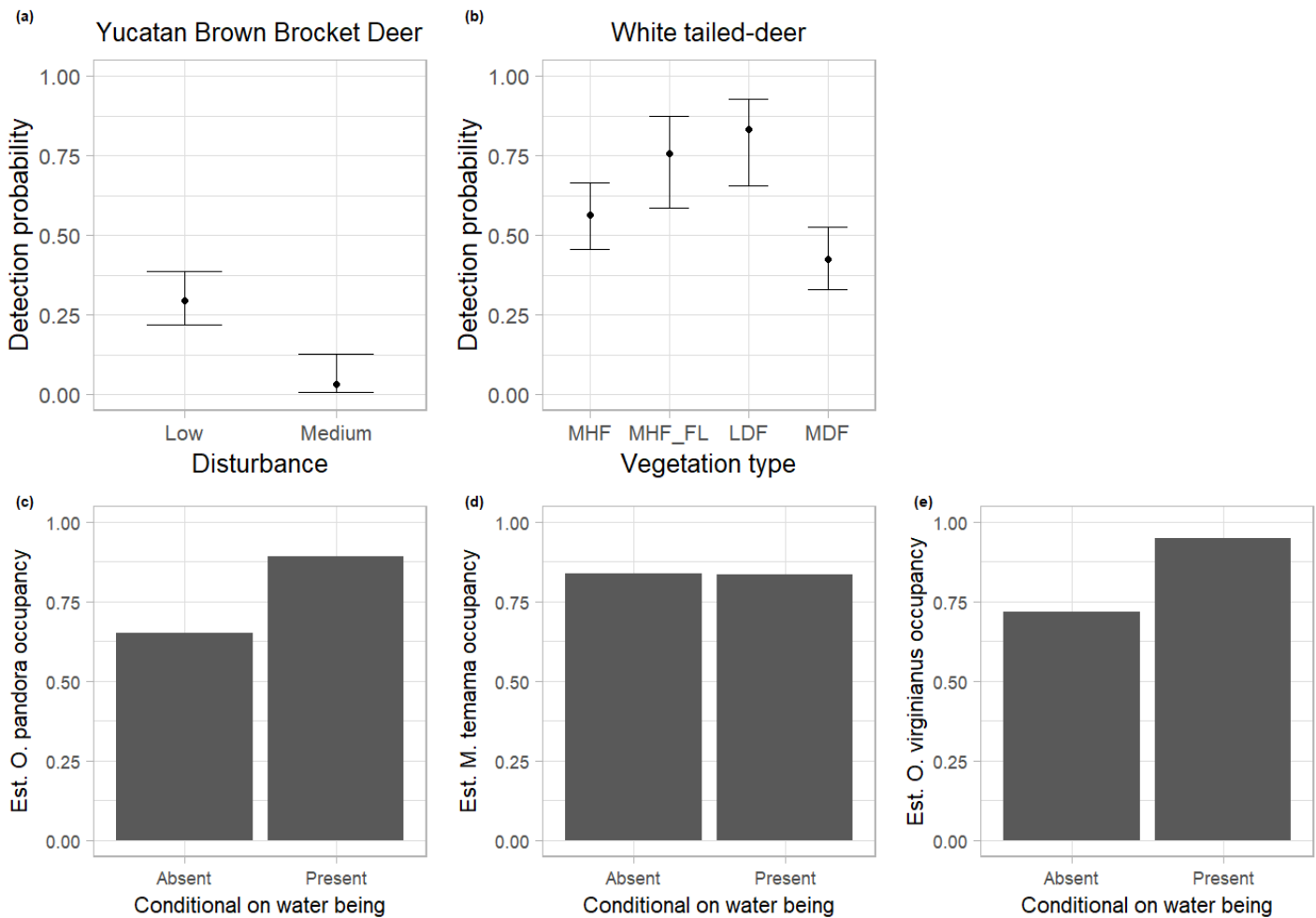
*Mazama temama*. Probably due to the few independent records obtained for the Central American red brocket deer, none of the variables under analysis had any effect on the probability of occupancy ( $\psi = 0.001$ ), colonization ( $\gamma = 0.99$ ), extinction ( $\epsilon = 0.65$ ), and detection ( $p = 0.01$ ; Table 2). Being the interaction with water slightly negative ( $SIF = 0.93$ ,  $P\text{-value} = 1.84e-01$ ; Figure 4d).

*Activity patterns*. We detected a predominant diurnal activity in two of the three deer species, white-tailed deer showed two peaks of activity (7:00 to 10:00 and 13:00 to 16:00; Figure 3d), and the Yucatan brown brocket deer showed a relatively constant activity during the day with a large peak from 11:00 to 13:00 (Figure 3a), while the Central American red brocket deer showed a cathemeral activity, having several activity peaks during the whole day (7:00 to 8:00, 10:00 to 11:00, 14:00 to 13:00, 17:00 to 18:00 and 23:00 to 24:00; Figure 3b). We found a high overlap in the daily activities of the three species ( $\Delta > 0.7$ ), the pair of species with the highest overlap coefficient were white-tailed deer and Yucatan brown brocket deer ( $\Delta = 0.86$ ,  $P\text{-value} = 0.63$ ; Figure 3d), followed by white-tailed deer and Central American red brocket deer ( $\Delta = 0.78$ ,  $P\text{-value} = 0.7$ ; Figure 3f), and

finally Yucatan brown brocket deer and Central American red brocket deer ( $\Delta = 0.73$ ,  $P\text{-value} = 0.6$ ; Figure 3e).

### Discussion

The type of human disturbance, behavior, habitat and parameters of the deer biology can explain the results obtained for the relative abundance and occupancy of the ponds. The White-tailed deer, despite not occupying a large number of ponds, presented greater abundance, probably due to the ponds being open environments, with a large amount of food in their surroundings. On the other hand, both Gray and Red brocket deer showed a low abundance throughout the nine years, which may be due to their elusive behavior and their more frugivorous diet (Weber 2005), and especially for *M. temama*, due to their preference for closed environments with dense humid vegetation (Bello-Gutiérrez et al. 2010). This differs from studies conducted in the same area with transects and track counts, in which a greater abundance of Brocket deer is reported relative to White-tailed deer, but because they are different methods, the results often differ from each other (Weber 2005; Reyna-Hurtado and Tanner 2007).



**Figure 4.** a) Relation between *O. pandora* Detection and level of disturbance. b) Relation between *O. virginianus* detection and vegetation type. c-e) Interaction between the presence or absence of water and the occupancy of the three deer species, in ponds of Calakmul Biosphere Reserve, México. MHF = Mid Humid Forest, MHF\_FL = Mid Humid Forest and Flooded Lowland, LDF = Low Dry Forest, MDF = Mid Dry Forest.

**Table 2.** Dynamic occupancy models for the three deer species in Calakmul Biosphere Reserve from 2014 to 2022. Covariates: Disturbance (Pert); Year; Distance to road (Dist\_road); Presence of water (Water); Vegetation type (Veg).  $\Psi$  = Occupancy,  $\gamma$  = Colonization,  $\epsilon$  = Extinction,  $p$  = Detection,  $K$  = Number of parameters,  $AICc$  = Akaike Information Criterion,  $\Delta AICc$  = Delta Akaike,  $AICc_w$  = Akaike weight.

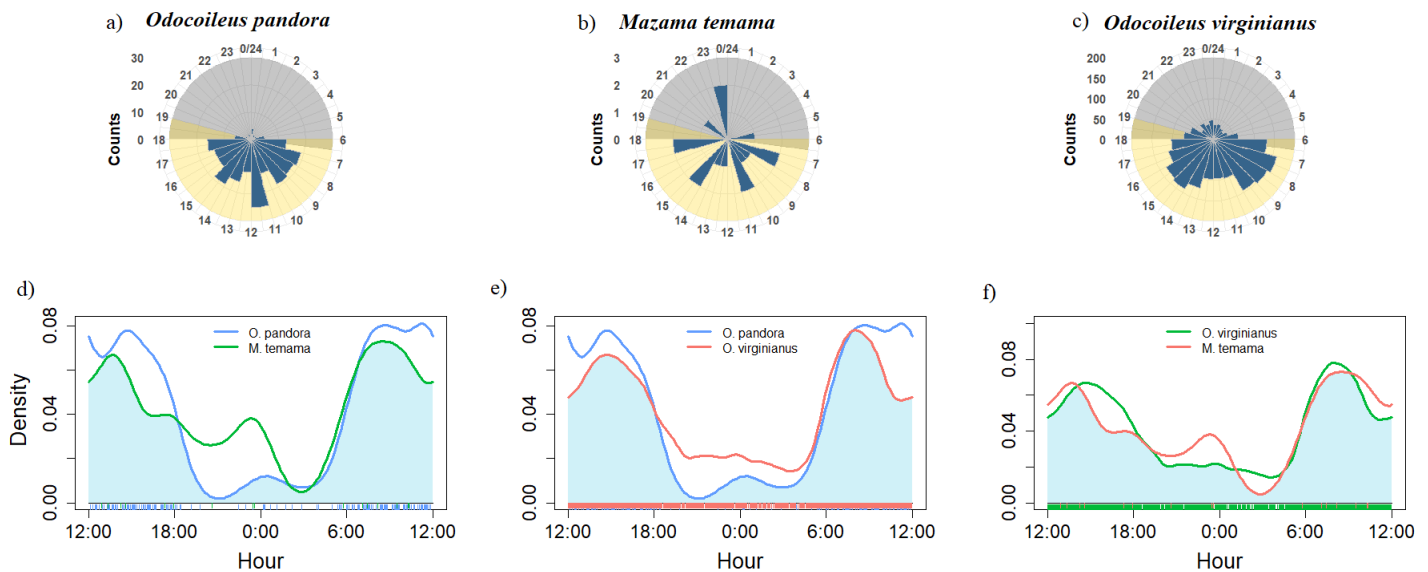
Model	K	AICc	$\Delta AICc$	$AICc_w$
<i>Odocoileus pandora</i>				
$\Psi(1); \gamma(1); \epsilon(1); p(\text{Pert})$	6	309.54	0	0.95
$\Psi(1); \gamma(1); \epsilon(\text{Pert}); p(1)$	6	316.99	7.45	0.02
$\Psi(1); \gamma(1); \epsilon(1); p(1)$	4	318.38	8.84	0.01
$\Psi(1); \gamma(\text{Year}); \epsilon(1); p(1)$	5	318.38	9.26	0.01
$\Psi(\text{Pert}); \gamma(1); \epsilon(1); p(1)$	6	321.27	11.73	0.00
$\Psi(1); \gamma(1 + \text{Year}); \epsilon(1 + \text{Pert}); p(\text{Pert})$	9	334.46	24.92	0.00
<i>Mazama temama</i>				
$\Psi(1); \gamma(1); \epsilon(1); p(1)$	4	34.77	0	0.40
$\Psi(1); \gamma(\text{Year}); \epsilon(1); p(1)$	5	37.20	2.43	0.12
$\Psi(1); \gamma(\text{Dist\_road}); \epsilon(1); p(1)$	5	37.20	2.43	0.12
$\Psi(1); \gamma(1); \epsilon(1); p(\text{Year})$	5	37.85	3.09	0.08
$\Psi(1); \gamma(1); \epsilon(1); p(\text{Water})$	5	37.85	3.09	0.08
$\Psi(1); \gamma(1); \epsilon(1); p(\text{Pert})$	6	37.85	3.09	0.08
$\Psi(1); \gamma(1); \epsilon(1); p(\text{Dist\_road})$	5	37.85	3.09	0.08
$\Psi(1); \gamma(\text{Pert}); \epsilon(1); p(1)$	6	40.59	5.83	0.02
$\Psi(1); \gamma(1); \epsilon(\text{Pert}); p(1)$	6	40.62	5.86	0.02
$\Psi(1); \gamma(1 + \text{Year} + \text{Dist\_road} + \text{Pert}); \epsilon(1 + \text{Pert}); p(1 + \text{Year} + \text{Water} + \text{Pert} + \text{Dist\_road})$	15	288.96	254.19	0
<i>Odocoileus virginianus</i>				
$\Psi(1); \gamma(1); \epsilon(1); p(\text{Veg})$	8	418.35	0	0.93
$\Psi(1); \gamma(1); \epsilon(1); p(1)$	4	424.24	5.89	0.05
$\Psi(1); \gamma(1); \epsilon(\text{Year}); p(1)$	5	426.80	8.44	0.01
$\Psi(1); \gamma(1); \epsilon(\text{Pert}); p(1)$	6	430.44	12.08	0.00
$\Psi(1); \gamma(1); \epsilon(1 + \text{Year} + \text{Pert}); p(\text{Veg})$	11	449.66	31.31	0.00

Similarly, other studies throughout México report abundances of *M. temama*, being the highest in the El Triunfo Biosphere Reserve in Chiapas (Lira-Torres and Naranjo-Piñera 2003) and in the ejido of Nuevo Becal, Campeche (Ramírez 2016), with the species been more abundant in humid well-conserved areas. In the case of *O. virginianus*, its abundance is very fluctuating, due to its ability to adapt to disturbed areas, for example in San Luis Potosí, it presented an abundance of 5.6 in ecosystems of early successional stages and an abundance of 2.8 in those of medium successional stages. The abundance of *O. pandora* has been poorly studied outside of Campeche, and most studies lump the two brocket deer species into a single group (Weber 2005; Reyna-Hurtado and Tanner 2007), making it difficult to compare the abundance of these species. However, the results obtained in this study should be taken with caution, as they may be biased, because the positioning of the cameras was not random, but were placed specifically in ponds (Reyna-Hurtado et al. 2019).

The Yucatan brown brocket deer had the highest probability of occupancy in the ponds out of the three deer species throughout the nine years (despite not being very abundant), and therefore presented very low probabilities of colonization and extinction; however, none of the variables analyzed had an effect on these. This could be due to the fact that this species has been defined as a generalist

species (Weber 2005), adapting well to the diverse types of environments that the CBR has (Reyna-Hurtado and Tanner 2005), and to the different degrees of disturbance, either by human presence and/or distance to the roads. Previous studies have shown the adaptability of *O. pandora* to these environments, presenting high abundances for the species (Weber 2005; Reyna-Hurtado and Tanner 2007; Ramírez 2016), however, it has also been reported that this species is susceptible to hunting and that the presence of this activity has a negative effect on occupancy (Urquiza-Haas et al. 2009). The probability of detection was affected by the disturbance at the watering holes, decreasing with increased human presence, probably due to the species solitary and nervous nature, leading them to a selective use of watering holes with little human influx (Weber 2014).

White-tailed deer showed a low occupancy of the ponds, but with a high probability of colonization, and a low probability of extinction, this can be explained by the high amount of food found in these forest clearings, where herbaceous plants are abundant and are important resources for this species (García-Marmolejo et al. 2015; Ramírez 2016), although none of the variables had an effect on these, as in studies conducted in Nicaragua (Zeller et al. 2011). On the other hand, detection probability was influenced by the type of vegetation, varying among the four types of vegetation analyzed. Although this species is clas-



**Figure 3.** a-c) Number of records per hour for *Odocoileus pandora*, *Mazama temama* and *O. virginianus*. d-f) Kernel activity overlaps between each pair of species in Calakmul Biosphere Reserve, México.

sified as a generalist (Weber 2005) and has great plasticity, allowing it to inhabit a wide variety of ecosystems (Weber 2014; Gallina et al. 2014; Gallina and López-Arévalo 2016), it has shown a preference for dry and flooded lowland in the CBR. These habitats presented the highest probability of detection, followed by medium-humid and dry forests, which the species uses in proportion to their availability (Reyna-Hurtado and Tanner 2005).

In the case of Central American red brocket deer, both the probability of occupancy and detection were very low and the probability of colonization and extinction were high, probably due to the low abundance of this species in the reserve in this and other studies (Weber 2005; Ramírez 2016), as well as to the prevalence of non-optimal environments for this species, which prefers tropical forests with high humidity and high and dense vegetation cover, as a means of protection against predators (Bello-Gutiérrez et al. 2010; Ramírez 2016). In studies conducted in a nearby community forest (Ejido Nuevo Becal) the presence of this species was higher (Ramírez 2016) and there is even a sport hunting company focusing entirely on legally harvesting this species (Reyna-Hurtado pers. Obs.). Studies conducted in Los Chimalapas, Oaxaca, showed that the distance to the villages had a positive effect on the occupancy of *M. temama* and that the probability of detection is low, due to its cryptic behavior (Pérez-Irineo and Santos-Moreno 2016). Similarly, it has been detected that the presence of hunting has a negative effect on the occupancy of this species (Urquiza-Haas et al. 2009). On the other hand, in Costa Rica, it was determined that the colonization by *M. temama* was favored in areas with ecologically similar species as the temperature increased. Conversely, in areas with ecologically dissimilar species, colonization was favored as the temperature decreased (Beaudrot et al. 2019).

The presence of water in the ponds was an environmental variable of special interest in this work, because it has been demonstrated that it is a vital resource for other ungulate species in the reserve (Reyna-Hurtado and Tanner 2005; Reyna-Hurtado et al. 2012; Pérez-Cortez et al. 2012; Sandoval-Seres et al. 2016; Sánchez-Pinzón et al. 2020). White-tailed deer as well as Yucatan brown brocket deer showed a slight positive interaction with the presence of water, allowing us to infer that the presence of the resource may be a factor that influences the visit to the ponds, however it is uncertain if it is for consumption or for some other reason, such as a greater amount of some herbaceous species. In other regions, water has been found to be a determining factor in the activities of white-tailed deer, altering their behavior (Gallina et al. 1998) or extending their home range when the resource is scarce (Kroll 1992; Contreras-Moreno et al. 2021). The importance of water availability in the behavior and survival of this species (and probably of other cervids) is clear (Bello et al. 2001). The interaction of the Central American brocket deer with water was slightly negative. This finding is inconsistent with other studies in the tropics, which report the importance of water for the brocket deer species (Zeller et al. 2011). The CBR represents the driest portion of the area and *M. temama* prefers humid areas, such as the adjacent community areas to the CBR, where the species seems to be more abundant (Ramírez 2016; Reyna-Hurtado unpublished data). This discordance also may be due to the low number of records we obtained for this species.

Two of the three deer species studied, the white-tailed and the Yucatan brown brocket deer showed daily diurnal activity; the white-tailed deer had activity peaks during most of the day, but avoiding the hottest hours (11:00 to 13:00), agreeing with other studies for this species in the east and center of Mexico (Hernández-SaintMartin et al. 2013;



[Soria-Díaz and Monroy-Vilchis 2015](#); [Ramírez 2016](#); [Soria-Díaz et al. 2016](#); [Moreira-Ramírez et al. 2019](#)) and Costa Rica ([Botts et al. 2020](#)), although contrasting with studies done in arid environments and in Sierra Madre Occidental ([Beier and McCullough 1990](#); [Gallina et al. 2005](#)), where activity peaks were reported at dawn and dusk. Likewise, the Yucatan brown brocket deer was active during the day, presenting a large peak between 11:00 and 12:00, agreeing with previous works in Campeche and Guatemala ([Ramírez 2016](#); [Moreira-Ramírez et al. 2019](#)). In contrast, the Central American red brocket deer showed cathemeral activity, which is consistent with most studies for this species, both in México ([Pérez-Irineo and Santos-Moreno 2016](#); [Moreira-Ramírez et al. 2019](#); [Pérez-Irineo et al. 2021](#); [González et al. 2021](#); [Salazar-Ortiz et al. 2022](#)) and Central America ([Arroyo-Arce et al. 2016](#); [Arroyo-Arce et al. 2017](#); [Moreira-Ramírez et al. 2019](#); [Botts et al. 2020](#)), varying at diurnal or nocturnal times in few cases ([Ramírez 2016](#); [Pérez-Irineo et al. 2021](#); [Moreno et al. 2023](#)).

Activity overlap was high among the three deer species ( $\Delta > 0.7$ ), which lead us to hypothesize that they are able to coexist in the same environment due to the clear separation in behavior and diet specialization. The white-tailed deer being a habitat generalist browser with high consumption of leaves and stems throughout the year and a few fruits during the wet season; the Yucatan brown brocket deer is also a habitat generalist but is mainly frugivorous during the dry season and a browser in the wet season; and the Central American red brocket deer is a specialist frugivorous of well-conserved and dense habitats ([Weber 2005](#)).

In this study it was shown that among the variables analyzed there is not one that influences deer occupancy in the ponds, so it is likely that this is due to a combination of multiple factors and interactions among these species, however, it was seen that these species, like other ungulates, have a positive interaction with the presence of water. Ponds are vital resources in the Calakmul Biosphere Reserve, being one of the few semi-perennial water sources for wildlife during the dry season. Increasing temperatures, desiccation, changing rainfall patterns and human disturbance in the ponds threaten these unique microenvironments, endangering the natural habitats of the species and the biotic community in general, making them priority areas for biodiversity conservation. The CBR is a unique place that hold population of three sympatric species of deer. We hope that this research helps to understand the ecological requirements of these interesting species and how they have coexisted in this tropical, semidry environment.

## Acknowledgements

We would like to thank A. Herrera Navarro, S. Ramírez Chaparro, J. Luna Flores, A. Pineda Medina and M. Bonilla Urzúa for their valuable comments on this manuscript. RR-H appreciates the help of E. Rojas-Flores in all aspects of this research and great appreciation goes to S. Calme, M. Sanvicente, J. Zuñiga, C. Coutiño, D. Sima, and several students

that helped to collect the data here presented. The Comisión Nacional de Áreas Naturales Protegidas (CONANP) facilitated research in Calakmul. El Colegio de la Frontera Sur (ECOSUR) supported the corresponding author over all these years that research was conducted. CONAHCYT provided funds through the grant Ciencia Básica 2012 Núm. 182386 and Comisión Nacional de Áreas Nacionales Protegidas (CONANP, Programa ProRest 2022). Thank you to S. Ticul Alvarez for the invitation to submit this contribution to THERYA to honor our friend Sonia Gallina a prominent researcher of deer in Mexico.

## Literature cited

- ALAYÓN-GAMBOA, ET AL. 2019. Calakmul frente a la primera mitad del siglo XXI. *Ecofronteras* 23:18–20.
- ANDRADE-PONCE, ET AL. 2022. A framework to interpret co-occurrence patterns from camera trap data: The case of the gray fox, the bobcat, and the eastern cottontail rabbit in a tropical dry habitat. *Journal of Zoology* 318:91–103.
- ARROYO-ARCE, S., I. THOMSON, AND R. SALOM-PÉREZ. 2016. Relative abundance and activity patterns of terrestrial mammalian species in Barra del Colorado Wildlife Refuge, Costa Rica. *Cuadernos de Investigación UNED* 8:131–137.
- ARROYO-ARCE, S., ET AL. 2017. Relative abundance and activity patterns of terrestrial mammals in Pacuare Nature Reserve, Costa Rica. *Cuadernos de Investigación UNED* 9:15–21.
- BEAUDROT, L., ET AL. 2019. Local temperature and ecological similarity drive distributional dynamics of tropical mammals worldwide. *Global Ecology and Biogeography* 28:976–991.
- BEIER, P., AND D. R. MCCULLOUGH. 1990. Factors Influencing White-Tailed Deer Activity Patterns and Habitat Use. *Wildlife Monographs* 109:3–51.
- BELLO, J., REYNA, R., AND J. SCHIPPER. 2016. *Mazama temama*. The IUCN Red List of Threatened Species 2016: e.T136290A22164644.
- BELLO, J., ET AL. 2001. Activity Areas and Distance to Water Sources by White-Tailed Deer in Northeastern Mexico. *Vida Silvestre Neotropical* 11:30–37.
- BELLO-GUTIÉRREZ, J., R. REYNA-HURTADO, AND J. WILHAM. 2010. Central American Red Brocket Deer *Mazama temama* (Kerr 1792). Pp. 101–118, in *Neotropical Cervidology Biology and Medicine of Latin American Deer* (Barbanti Duarte, J. M., and S. González, eds.). Funep and IUCN. Jaboticabal, Brazil.
- BENÍTEZ, J. A., ET AL. 2021. Impacto de la Vía Férrea y del Crecimiento Turístico Asociado al Tren Maya; medidas de mitigación y cambios al diseño para las reservas de Calakmul y Balam-kú. Pp. 576–634, in *Impacto de las vías de comunicación sobre la fauna silvestre en áreas protegidas: estudios de caso para el sureste de México* (Benítez, J. A., and G. Escalona-Segura, eds.). El Colegio de la Frontera Sur. Campeche, México.
- BETTS, M. G., ET AL. 2008. Dynamic occupancy models reveal within-breeding season movement up a habitat quality gradient by a migratory songbird. *Ecography* 31:592–600.
- BOTTS, R. T., ET AL. 2020. Circadian activity patterns of mammalian predators and prey in Costa Rica. *Journal of Mammalogy* 101:1313–1331.
- BRICENO-MÉNDEZ, M. A., AND F. M. CONTRERAS-MORENO. 2020. Los Temazates de Calakmul: Venados poco conocidos. *Desde El Herbario CICY* 12:205–211.

- BRUNER, A. G., *ET AL.* 2001. Effectiveness of parks in protecting tropical biodiversity. *Science* 291:125-128.
- BURNHAM, K. P., AND D. R. ANDERSON. 2002. Model selection and multimodel inference. Springer. New York, U.S.A.
- CARABIAS-LILLO, J., *ET AL.* 1999. Programa de Manejo de la Reserva de la Biosfera Calakmul. Instituto Nacional de Ecología. Estado de México, México.
- CEBALLOS, G. (ED.). 2014. Mammals of Mexico. Johns Hopkins University Press. Baltimore, U.S.A.
- COMISIÓN NACIONAL DE ÁREAS NATURALES PROTEGIDAS (CONANP). 2023. Listado de las áreas Naturales Protegidas de México. <http://sig.conanp.gob.mx/website/pagsig/listanp/>
- CONTRERAS-MORENO, F., *ET AL.* 2021. Seasonal home-range size of the white-tailed deer, *Odocoileus virginianus thomasi*, in a tropical wetland of southeastern Mexico. *Revista Mexicana de Biodiversidad* 92:923660.
- GALLINA, S., AND H. LÓPEZ-ARÉVALO. 2016. *Odocoileus virginianus*. The IUCN Red List of Threatened Species 2016:e.T42394A22162580.
- GALLINA, S., A. PÉREZ-ARTEAGA, AND S. MANDUJANO. 1998. Patrones de actividad del venado cola blanca (*Odocoileus virginianus*) en un matorral xerófilo de México. *Boletín de la Sociedad Biológica de Concepción Chile* 66:221-228.
- GALLINA, S., P. CORONA-ZÁRATE, AND J. BELLO. 2005. El comportamiento del venado cola blanca en zonas semiáridas del Noreste de México. Pp. 193–203, *in* Contribuciones mastozoológicas en homenaje a Bernardo Villa (Sánchez-Cordero, V., and R. A. Medellín, eds.). Instituto de Biología de la UNAM-instituto de ecología de la UNAM-CONABIO, México.
- GALLINA, S., S. MANDUJANO, AND O. A. VILLARREAL ESPINO-BARROS (EDS.). 2014. Monitoreo y manejo del venado cola blanca: conceptos y métodos. Instituto de Ecología y Benemérita Universidad Autónoma de Puebla. Veracruz, México.
- GALLINA, S., *ET AL.* 2010. White-tailed deer *Odocoileus virginianus* (Zimmermann 1780). Pp. 101–118, *in* Neotropical cervidology biology and medicine of Latin American deer (Barbanti Duarte, J. M., and S. González, eds.). Funep and IUCN. Jaboticabal, Brazil.
- GARCÍA-MARMOLEJO, G., *ET AL.* 2013. Potential distributional patterns of three wild ungulate species in a fragmented tropical region of northeastern Mexico. *Tropical Conservation Science* 6:539–557.
- GARCÍA-MARMOLEJO, G., *ET AL.* 2015. Landscape composition influences abundance patterns and habitat use of three ungulate species in fragmented secondary deciduous tropical forests, Mexico. *Global Ecology and Conservation* 3:744–755.
- GONZÁLEZ, C. C., *ET AL.* 2021. Movement ecology of Jaguars and predator-prey interactions. Authorea.
- GONZÁLEZ-MARÍN, M. R., *ET AL.* 2008. Densidad y Distribución de Ungulados Silvestres en la Reserva Ecológica El Edén, Quintana Roo, México. *Acta Zoológica Mexicana* 24:73-93.
- GUTIÉRREZ, E. E., *ET AL.* 2017. A gene-tree test of the traditional taxonomy of American deer: The importance of voucher specimens, geographic data, and dense sampling. *ZooKeys* 697:87–131.
- HERNÁNDEZ-SAINTMARTÍN, A. D., *ET AL.* 2013. Activity patterns of Jaguar, Puma and their potential prey in San Luis Potosi, Mexico. *Acta Zoologica Mexicana* 29:520–533.
- KELLNER, K. F., *ET AL.* 2023. The unmarked R package: Twelve years of advances in occurrence and abundance modelling in ecology. *Methods in Ecology and Evolution* 14:1408-1415.
- KROLL, J. C. 1992. A practical guide to producing and harvesting white-tailed deer. Institute of white-tailed deer management and research center for applied studies in forestry. Stephen F. Austin State University. Austin, U.S.A.
- LIRA TORRES, I., AND E. J. NARANJO PIÑERA. 2003. Abundancia, preferencia de hábitat e impacto del ecoturismo sobre el puma y dos de sus presas en la reserva de la biosfera El Triunfo, Chiapas, México. *Revista Mexicana de Mastozoología* 7:20-39.
- LOUVRIER, J., *ET AL.* 2017. Mapping and explaining wolf recolonization in France using dynamic occupancy models and opportunistic data. *Ecography* 41:647-660.
- MACKENZIE, D. I., *ET AL.* 2003. Estimating site occupancy, colonization, and local extinction when a species is detected imperfectly. *Ecology* 84:2200-2207.
- MACKENZIE, D. I., *ET AL.* 2011. An integrated model of habitat and species occurrence dynamics. *Methods in Ecology and Evolution* 2:612-622
- MANDUJANO, S. 2019. Índice de abundancia relativa: RAI. Pp. 137–152, *in* Fototrampeo en R: organización y análisis de datos (Mandujano Rodríguez, S., and L. A. Pérez-Solano, eds.). Instituto de Ecología A. C. Xalapa, México.
- MARTÍNEZ, E., AND C. GALINDO-LEAL. 2002. La Vegetación de Calakmul, Campeche, México: Clasificación, Descripción y Distribución. *Boletín de la Sociedad Botánica de México* 71:7-32.
- MEDELLÍN, R. A., AND M. EQUIHUA. 1998. Mammal species richness and habitat use in rainforest and abandoned agricultural fields in Chiapas, Mexico. *Journal of Applied Ecology* 35:13–23.
- MOREIRA-RAMÍREZ, J. F., *ET AL.* 2019. Estado de conservación del venado cola blanca, el cabrito rojo y el cabro bayo en Guatemala, en la Reserva de Biosfera Calakmul y el ejido Nuevo Becal, México. Pp. 97–124, *in* Perspectivas de investigación sobre los mamíferos silvestres de Guatemala (Kraker, C., A. P. Calderón, and A. A. Cabrera, eds.). ASOQUAMA. Guatemala city, Guatemala.
- MORENO, R., *ET AL.* 2023. Terrestrial mammals' species richness: diversity and activity patterns in the Darién National Park, Panamá. *Therya Notes* 4:2010–2018.
- O'BRIEN, T. G. 2011. Abundance, Density and Relative Abundance: A Conceptual Framework. Pp. 71–96, *in* Camera Traps in Animal Ecology: Methods and Analyses (O'Connell, A. F., J. D. Nichols, and K. Ullas Karanth, eds.). Springer. Tokyo, Japan.
- OLSON, G. S., *ET AL.* 2005. Modeling of site occupancy dynamics for northern spotted owls, with emphasis on the effects of barred owls. *Journal of Wildlife Management* 69:918-932.
- PENNINGTON, T. D., AND J. SARHUKAN. 1998. Arboles Tropicales de México. UNAM. Fondo de Cultura Económica. Distrito Federal, México.
- PÉREZ-CORTEZ, S., *ET AL.* 2012. Influencia de la disponibilidad de Agua en la presencia y abundancia de *Tapirus bairdii* en la Selva de Calakmul, Campeche, México. *Revista Mexicana de Biodiversidad* 83:753-761.
- PÉREZ-IRINEO, G., AND A. SANTOS-MORENO. 2016. Abundance, herd size, activity pattern and occupancy of ungulates in southeastern Mexico. *Animal Biology* 66:97–109.
- PÉREZ-IRINEO, G., A. HERNÁNDEZ-SÁNCHEZ, AND A. SANTOS-MORENO. 2021. Effect of anthropogenic activity on mammal activity patterns in two ecosystems. *Mammalia* 85:336–344.

- R CORE TEAM. 2023. R: A Language and Environment for Statistical Computing. R Foundation for Statistical Computing, Vienna, Austria. <https://www.R-project.org/>.
- RAMÍREZ, L. 2016. Abundancia relativa y patrones de actividad por venados en dos sitios de la región de Calakmul, Campeche, México (Tesis de licenciatura). Universidad Autónoma de Campeche. San Francisco de Campeche, México.
- REYNA-HURTADO, R., AND G. W. TANNER. 2005. Habitat preferences of ungulates in hunted and nonhunted areas in the Calakmul Forest, Campeche, Mexico. *Biotropica* 37:676–685.
- REYNA-HURTADO, R., AND G. W. TANNER. 2007. Ungulate relative abundance in hunted and non-hunted sites in Calakmul Forest (Southern Mexico). *Biodiversity and Conservation* 16:743–756.
- REYNA-HURTADO, R., AND K. SANCHEZ-PINZÓN. 2019. Ungulates of Calakmul. Pp. 89–104, in *Ecology and Conservation of Tropical Ungulates in Latin America* (Gallina-Tessaro, S. ed.). Springer Nature. Cham, Switzerland.
- REYNA-HURTADO, R., ET AL. 2012. Searching in heterogeneous environments: foraging strategies in the white-lipped peccary (*Tayassu pecari*). *Journal of Mammalogy* 92:124–133.
- REYNA-HURTADO, R., ET AL. 2010. Las aguadas de Calakmul, reservorios de fauna Silvestre y de la riqueza natural de México. *Biodiversitas* 93:2–6.
- REYNA-HURTADO, R., ET AL. 2019. Tapir population patterns under the disappearance of free-standing water. *Therya* 10:353–358.
- RICHMOND, O. M. W., J. E. HINES, AND S. R. BEISSINGER. 2010. Two-species occupancy models: a new parameterization applied to co-occurrence of secretive rails. *Ecological Applications* 20:2036–2046.
- RIDOUT, M., AND M., LINKIE. 2009. Estimating overlap of daily activity patterns from camera trap data. *Journal of Agricultural, Biological, and Environmental Statistics* 14:322–337.
- ROTA, C. T., ET AL. 2016. A multispecies occupancy model for two or more interacting species. *Methods in Ecology and Evolution* 7:1164–1173.
- ROWCLIFFE, M. 2023. Activity: Animal Activity Statistics. Rpackage version 1.3.4, <https://CRAN.R-project.org/package=activity>.
- SALAZAR-ORTIZ, J., ET AL. 2022. Populational attributes of the Central American red Brocket Deer (*Mazama temama*) in the Sierra de Zongolica, Veracruz, Mexico. *Agrociencia* 56:492–504.
- SÁNCHEZ-PINZÓN, K., ET AL. 2020. Peccaries and their relationship with water availability and their predators in Calakmul, México. *Therya* 11:213–220.
- SANDOVAL-SERES, E., ET AL. 2016. Pond use and relative abundance of *Tapirus bairdii* in the Calakmul region, Campeche, Mexico. *Therya* 7:39–50.
- SECRETARÍA DE MEDIO AMBIENTE Y RECURSOS NATURALES (SEMARNAT). 2018. Reserva de la Biosfera Calakmul. <https://www.gob.mx/semarnat/articulos/reserva-de-la-biosfera-calakmul-157277>.
- SORIA-DÍAZ, L., AND O. MONROY-VILCHIS. 2015. Monitoring population density and activity pattern of white-tailed deer (*Odocoileus virginianus*) in central Mexico, using camera trapping. *Mammalia* 79:43–50.
- SORIA-DÍAZ, L., O. MONROY-VILCHIS, AND Z. ZARCO-GONZÁLEZ. 2016. Activity pattern of puma (*Puma concolor*) and its main prey in central Mexico. *Animal Biology* 66:13–20.
- TEJEDA-CRUZ, C., ET AL. 2009. Habitat use of wild ungulates in fragmented landscapes of the Lacandon Forest, Southern Mexico. *Mammalia* 73:211–219.
- TOBLER, M. W., ET AL. 2008. An evaluation of camera traps for inventorying large- and medium-sized terrestrial rainforest mammals. *Animal Conservation* 11:169–178.
- URQUIZA-HAAS, T., C. A. PERES, AND P. M. DOLMAN. 2009. Regional scale effects of human density and forest disturbance on large-bodied vertebrates throughout the Yucatán peninsula, Mexico. *Biological Conservation* 142:134–148.
- WEBER, M. 2000. Effects of hunting on tropical deer populations in southeastern México (Master of Science). Royal Veterinary College, University of London. London, U.K.
- WEBER, M. 2005. Ecology and conservation of sympatric tropical deer populations in the Greater Calakmul Region, southeastern Mexico (Doctor of Philosophy). University of Durham. Durham, U.K.
- WEBER, M. 2008. Un especialista, un generalista y un oportunista: uso de tipos de vegetación por tres especies de venados en Calakmul, Campeche. Pp. 579–592, in *Avances en el Estudio de los Mamíferos de México II* (Lorenzo, C., E. Espinoza, and J. Ortega, eds.). Asociación Mexicana de Mastozoología A. C. San Cristóbal de las Casas, México.
- WEBER, M. 2014. Temazates y venados cola blanca tropicales. Pp. 435–466, in *Ecología y manejo de fauna silvestre en México* (Valdez R., and J. A. Ortega, eds). Colegio de Post Graduados. Estado de México, México.
- WEBER, M. AND J. M. MEDELLIN. 2010. Yucatan brown brocket deer *Mazama pandora* (Merriam 1901). Pp. 211–216, in *Neotropical Cervidology Biology and Medicine of Latin American Deer* (Barbanti Duarte R. A., and S. González, eds.). Funep and IUCN. Jaboticabal, Brazil.
- WEBER, M., P. C. DE GRAMMONT, AND A. D. CUARÓN. 2016. *Mazama pandora*. The IUCN Red List of Threatened Species 2016: e.T29622A22154219.
- ZELLER, K. A., ET AL. 2011. Integrating occupancy modeling and interview data for corridor identification: a case study for jaguars in Nicaragua. *Biological Conservation* 144:892–901.

Associated editor: Luz Pérez Solano

Submitted: November 30, 2023; Reviewed: December 30, 2023

Accepted: January 1, 2023; Published on line: January 30, 2024

